



Price
£390,000

Freehold

3x  2x  2x 

**Oyster Close, Herne Bay,
Kent, CT6**

Wards
Helping you move forwards



Main features

- Abbey Homes built 'Corfe' style
- Conservatory extension to rear
- Block-paved driveway with space for multiple cars
- Converted garage to create a separate sitting room
- Stunning kitchen/diner with breakfast bar and integrated appliances

Accommodation

GROUND FLOOR

Entrance Hallway
Cloakroom
Lounge: 15'4 x 13'1 (4.68m x 3.99m)
Kitchen/Diner: 15'1 x 10'8 (4.60m x 3.25m)
Sitting Room: 10'5 x 8'3 (3.18m x 2.52m)
Conservatory: 14'5 x 9'5 (4.40m x 2.87m)

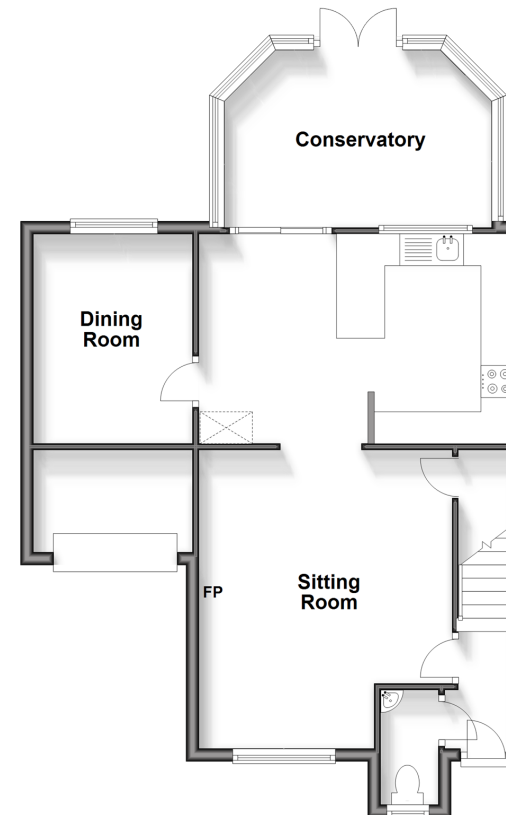
FIRST FLOOR

Landing
Bathroom: 8'2 x 6'4 (2.49m x 1.93m)
Bedroom 1: 12'2 x 9'3 (3.71m x 2.82m)
Bedroom 2: 11'2 x 8'7 (3.41m x 2.62m)
Bedroom 3: 9'6 x 8'8 (2.90m x 2.64m)

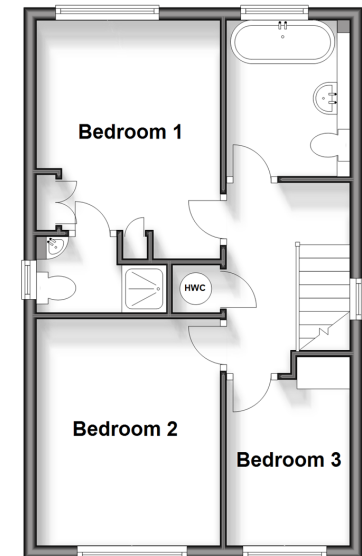
OUTSIDE

Driveway
Front Garden
Cabin
Rear Garden

Ground Floor
Approx. 65.0 sq. metres (699.9 sq. feet)



First Floor
Approx. 40.6 sq. metres (436.7 sq. feet)



Call Herne Bay - 01227 361226 ■ wardsofkent.co.uk

- If buying to let, the energy rating will need to be improved to at least 'E' rating before you can let the property
- Legal advice should be taken to verify fixtures/fittings, planning, alterations and/or lease details
- Appliances & services are untested, dimensions are approximate and floor plans are not to scale



11226596/20240416/GS/GG