



OVER 60?

Secure this property
for up to **59% less!**

Price
£375,000

Freehold

3x  2x  2x 

**Douglas Road,
Herne Bay, Kent, CT6**

Wards
Helping you move forwards



Main features

- Classic styling and original features
- Separate lounge and dining room and a large kitchen/ breakfast room
- Close to town centre
- Family bathroom with separate Shower Room
- No onward chain

Accommodation

GROUND FLOOR

Entrance Hallway

Lounge: 15'8 x 12'11 (4.78m x 3.94m)

Dining Room: 13'1 x 11'2 (3.99m x 3.41m)

Kitchen/ Breakfast Room: 19'7 x 10'8 (5.97m x 3.25m)

Cloakroom

FIRST FLOOR

Landing

Bedroom 1: 14'8 x 13'4 (4.47m x 4.07m)

Bedroom 2: 12'8 x 11'6 (3.86m x 3.51m)

Shower Room

Bathroom

Bedroom 3: 11'4 x 10'8 (3.46m x 3.25m)

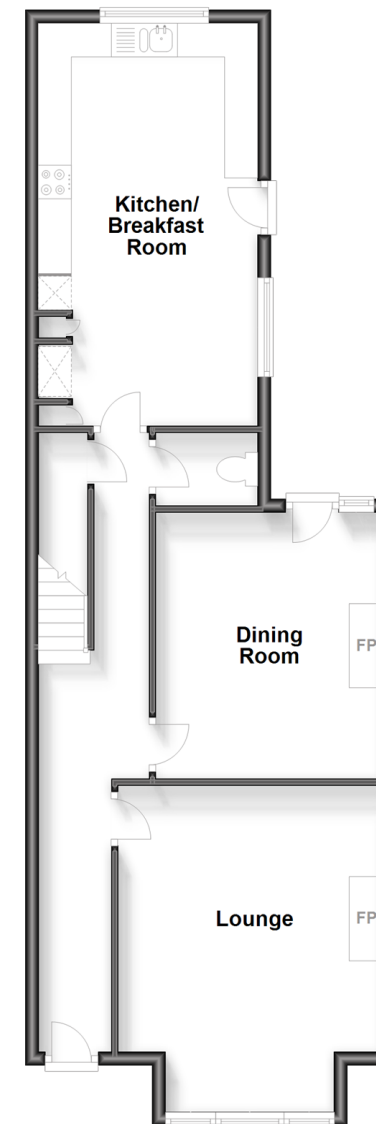
OUTSIDE

Front Garden

Rear Garden

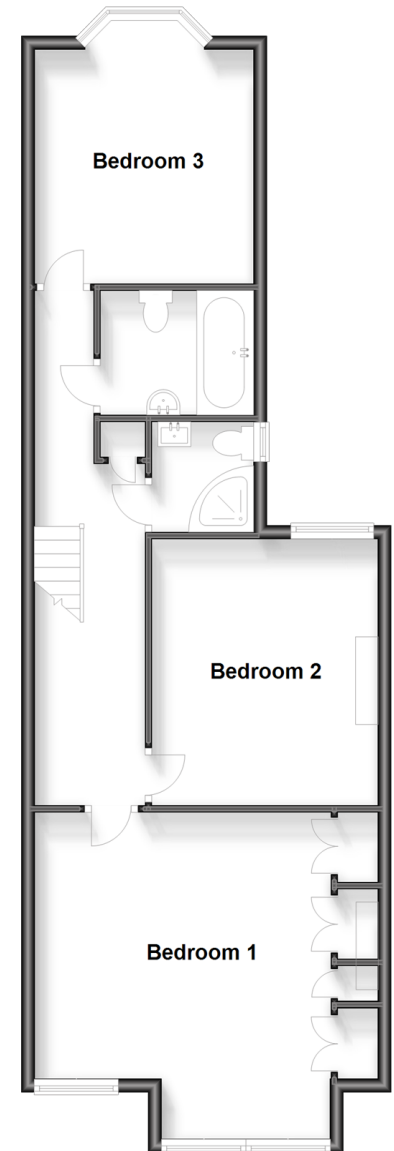
Ground Floor

Approx. 68.1 sq. metres (732.8 sq. feet)



First Floor

Approx. 68.3 sq. metres (735.1 sq. feet)



Call Herne Bay - 01227 361226 ■ wardsofkent.co.uk

- Legal advice should be taken to verify fixtures/fittings, planning, alterations and/or lease details
- Appliances & services are untested, dimensions are approximate and floor plans are not to scale
- Through a Homewise Home For Life Plan people aged 60+ can secure this property for up to 59% less, by purchasing a Lifetime Lease.



11235709/20230801/GS/GG