



OVER 60?

Secure this property
for up to **59% less!**

Price

£205,000

Leasehold

2x  2x  1x 

**Ryder Court, Herne Bay,
Kent, CT6**

Wards
Helping you move forwards



Main features

- Ground floor 2 bedroom apartment
- En-suite to bedroom 1
- Lounge with Juliet french doors looking over allocated parking bay
- Visitors parking and easy access to the Thanet Way

Accommodation

GROUND FLOOR

Entrance Hallway

Bathroom: 6'9 x 6'1 (2.06m x 1.86m)

Bedroom 1: 12'7 x 6'5 (3.84m x 1.96m)

En Suite Shower Room

Bedroom 2: (L-shaped) 8'5 x 6'8 (2.57m x 2.03m) plus 3'8 x 5'8 (1.12m x 1.73m)

Lounge / Kitchen: 17'2 x 16'2 (5.24m x 4.93m)

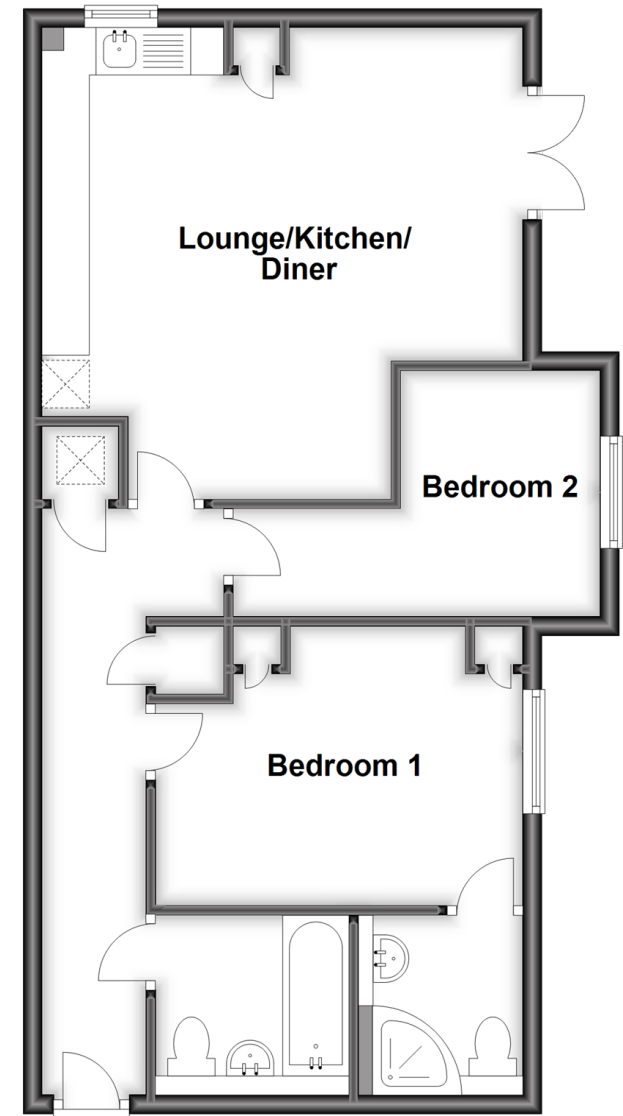
OUTSIDE

Allocated Parking Space x 1

Communal Garden

Ground Floor

Approx. 59.1 sq. metres (636.4 sq. feet)



Call Herne Bay - 01227 361226 ■ wardsofkent.co.uk

- Legal advice should be taken to verify fixtures/fittings, planning, alterations and/or lease details
- Appliances & services are untested, dimensions are approximate and floor plans are not to scale
- Through a Homewise Home For Life Plan people aged 60+ can secure this property for up to 59% less, by purchasing a Lifetime Lease.



11237369/20230718/FW/GG