



Price
£132,000

Leasehold

2x  1x  1x 

**Heath Grove, Herne Bay,
Kent, CT6**

OVER 60?

Secure this property
for up to **59% less!**

Wards
Helping you move forwards



Main features

- Beautifully presented throughout, NHBC Warranty
- Easy access to Thanet Way
- First floor apartment with allocated parking
- Shared ownership option with Moat Homes
- Large open-plan lounge and kitchen area

Accommodation

FIRST FLOOR

Entrance Hallway

Landing

Bathroom

Lounge/Kitchen/Diner: 22'4 x 21'0
(6.81m x 6.41m)

Bedroom 2: 11'1 x 10'7 (3.38m x 3.23m)

Bedroom 1: 13'9 x 9'5 (4.19m x 2.87m)

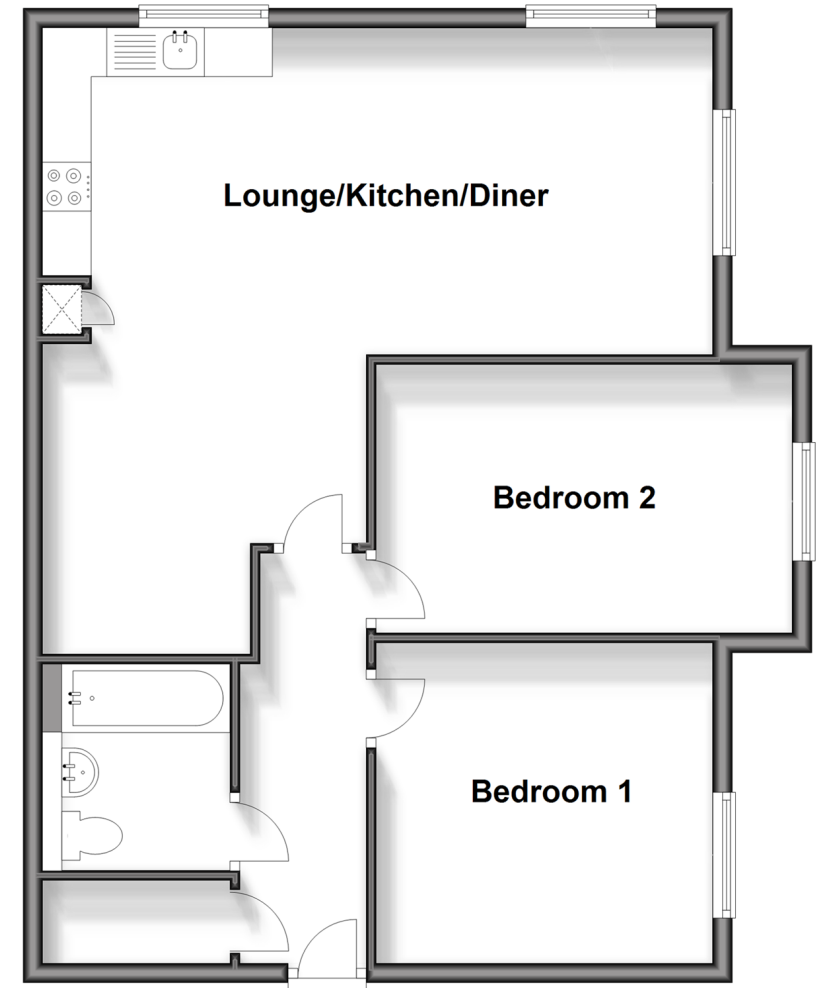
OUTSIDE

Allocated Parking

Communal Garden

First Floor

Approx. 67.9 sq. metres (731.1 sq. feet)



Call Herne Bay - 01227 361226 ■ wardsofkent.co.uk

- Legal advice should be taken to verify fixtures/fittings, planning, alterations and/or lease details
- Appliances & services are untested, dimensions are approximate and floor plans are not to scale
- Through a Homewise Home For Life Plan people aged 60+ can secure this property for up to 59% less, by purchasing a Lifetime Lease.



11237577/20240229/GS/GG