

OVER 60?

Secure this property
for up to **59% less!**



Price

£390,000

Freehold

2x  1x  1x 

Selsea Avenue,

Herne Bay, Kent, CT6

Wards
Helping you move forwards



Main features

- Set on a double width plot
- Substantial driveway parking
- Large lounge, CCTV and part boarded loft
- A short walk to the beach and into town
- Wet room & gas central heating

Accommodation

GROUND FLOOR

Entrance Porch

Entrance Hallway

Bedroom 1: 13'4 x 13'2 (4.07m x 4.02m)

Bedroom 2: 10'9 x 10'9 (3.28m x 3.28m)

Wet Room: 6'8 x 5'9 (2.03m x 1.75m)

Lounge: 16'4 x 12'7 (4.98m x 3.84m)

Sun Room: 11'3 x 6'6 (3.43m x 1.98m)

Kitchen: 12'9 x 11'9 (3.89m x 3.58m)

Utility Room: 13'3 x 6'5 (4.04m x 1.96m)

OUTSIDE

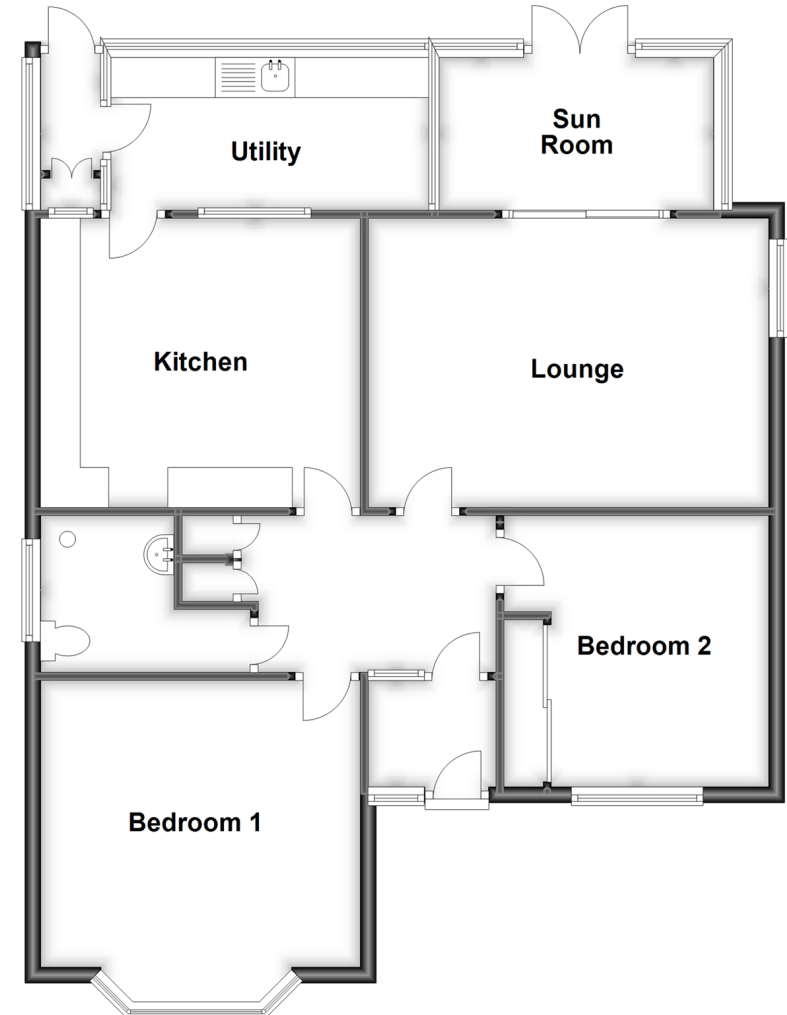
Front Garden

Driveway

Rear Garden

Ground Floor

Approx. 91.3 sq. metres (982.7 sq. feet)



Call Herne Bay - 01227 361226 ■ wardsofkent.co.uk

- Legal advice should be taken to verify fixtures/fittings, planning, alterations and/or lease details
- Appliances & services are untested, dimensions are approximate and floor plans are not to scale
- Through a Homewise Home For Life Plan people aged 60+ can secure this property for up to 59% less, by purchasing a Lifetime Lease.



11237691/20230419/GG/GG