



Price
£125,000

Leasehold

1x  1x  1x 

**Thwaytes Court,
Minster Drive,
Herne Bay, Kent, CT6**

OVER 60?

Secure this property
for up to **59% less!**



Video Tour available

Wards
Helping you move forwards



Main features

- **First floor retirement apartment**
- **Communal lounge and car parking**
- **Chain free**
- **This property is ready to move straight into and has a site manager**
- **Located on the outskirts of town it is within walking distance of local amenities and public transport**

Accommodation

FIRST FLOOR

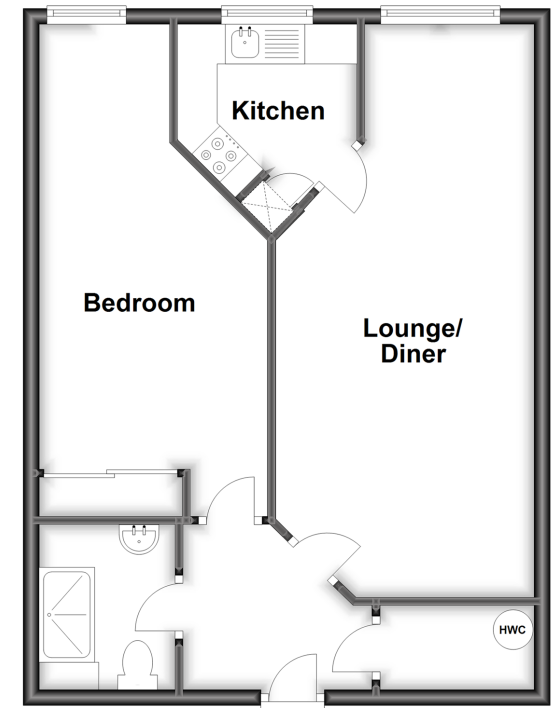
Entrance Hallway
 Shower Room: 6'8 x 5'6 (2.03m x 1.68m)
 Bedroom : 18'1 x 9'2 (5.52m x 2.80m)
 Lounge/Diner: 23'7 x 10'7 (7.19m x 3.23m)
 Kitchen: 7'4 x 6'0 (2.24m x 1.83m)

OUTSIDE

Communal Garden
 Communal Car Park

First Floor

Approx. 52.2 sq. metres (562.0 sq. feet)



Call Herne Bay - 01227 361226 ■ wardsofkent.co.uk

■ Legal advice should be taken to verify fixtures/fittings, planning, alterations and/or lease details
 ■ Through a Homewise Home For Life Plan people aged 60+ can secure this property for up to 59% less, by purchasing a Lifetime Lease.

■ Appliances & services are untested, dimensions are approximate and floor plans are not to scale