



Price

£549,950

Freehold

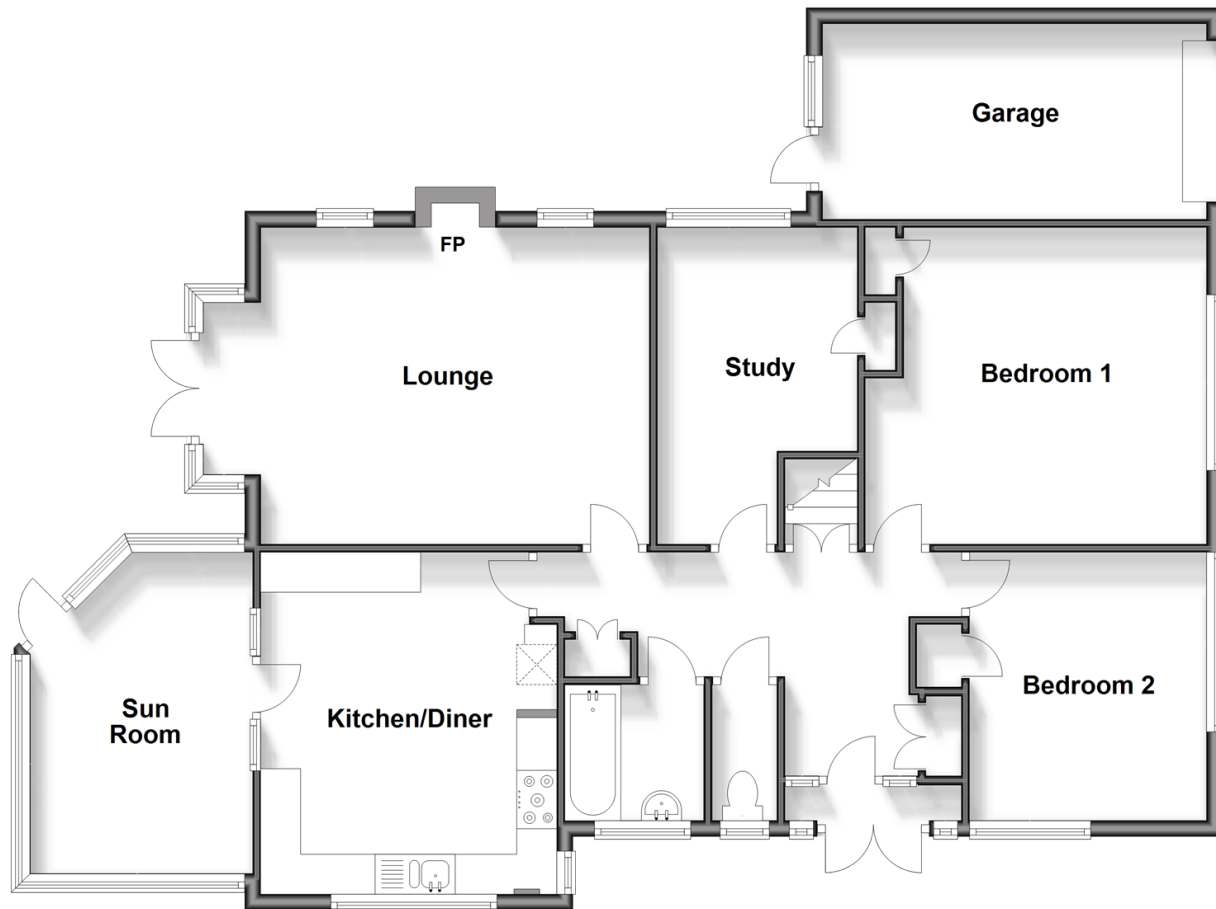
4x  2x  2x 

Central Avenue, Herne Bay, Kent, CT6

Wards
Helping you move forwards

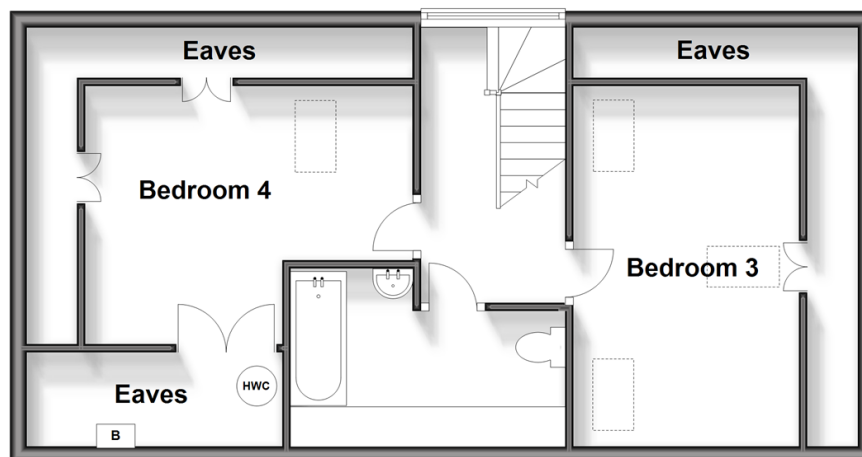
Ground Floor

Approx. 115.4 sq. metres (1242.0 sq. feet)



First Floor

Approx. 54.6 sq. metres (587.9 sq. feet)



Accommodation

GROUND FLOOR

Entrance Porch

Entrance Hallway

Separate Toilet

Bathroom

Kitchen/Diner: 14'8 x 12'2 (4.47m x 3.71m)

Sun Room: 14'4 x 9'7 (4.37m x 2.92m)

Lounge: 18'6 x 13'2 (5.64m x 4.02m)

Study: 13'3 x 8'2 (4.04m x 2.49m)

Bedroom 1: 13'9 x 13'8 (4.19m x 4.17m)

Bedroom 2: 11'3 x 9'7 (3.43m x 2.92m)

FIRST FLOOR

Landing

Bedroom 3: 13'5 x 11'7 (4.09m x 3.53m)

Bedroom 4: 14'9 x 9'3 (4.50m x 2.82m)

Bathroom: 11'4 x 7'3 (3.46m x 2.21m)

OUTSIDE

Off Road Parking

Garage

Rear Garden



Main features

- A detached family house with converted attic
- Potential for no onward chain
- Solar panels assist low running costs
- A large corner plot with vast parking, suitable for boat or camper van
- Sea views from first floor and kitchen and a short walk to the beach



Nearest Schools

Primary Schools: Hampton Primary 0.6 miles, Herne Bay Junior School 1.0 miles, Briary Primary 1.2 miles
Secondary Schools: Herne Bay High School 0.9 miles, The Community College Whitstable 4.3 miles - Canterbury school bus service stop at the corner of the road



Transport Information

Train Stations: Herne Bay 0.7 miles, Chestfield & Swalecliffe 2.6 miles, Whitstable 4.1 miles



Address

Central Avenue, Herne Bay, Kent, CT6



Directions

For directions to this property please contact us.



Call Herne Bay Branch 01227 361226 ■ wardsofkent.co.uk



■ Legal advice should be taken to verify fixtures/fittings, planning, alterations and/or lease details ■ Appliances & services are untested, dimensions are approximate and floor plans are not to scale



11237943/20240212/AW/GG