



Guide Price
£200,000

Leasehold

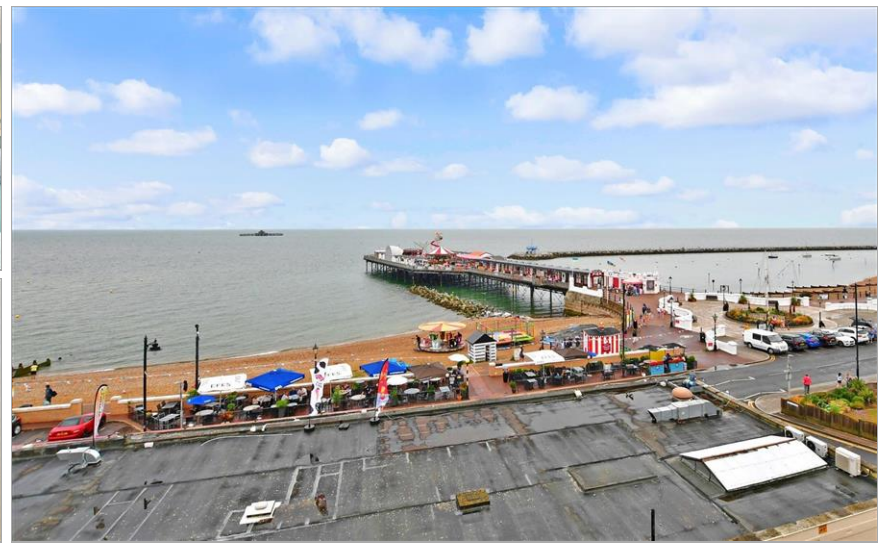
2x  1x  1x 

Chislet Court,
Pier Avenue, Herne Bay,
Kent, CT6

OVER 60?

Secure this property
for up to **59% less!**

Wards
Helping you move forwards



Main features

- **Assisted living retirement property**
- **3rd floor with breathtaking sea views**
- **Re fitted kitchen and bathroom suites**
- **Visitors car parking, a stones throw from the beach**
- **Large communal lounge, laundry and guest suites**

Accommodation

THIRD FLOOR

Entrance Hallway

Lounge: 16'5 x 10'8 (5.01m x 3.25m)

Kitchen: 10'8 x 7'6 (3.25m x 2.29m)

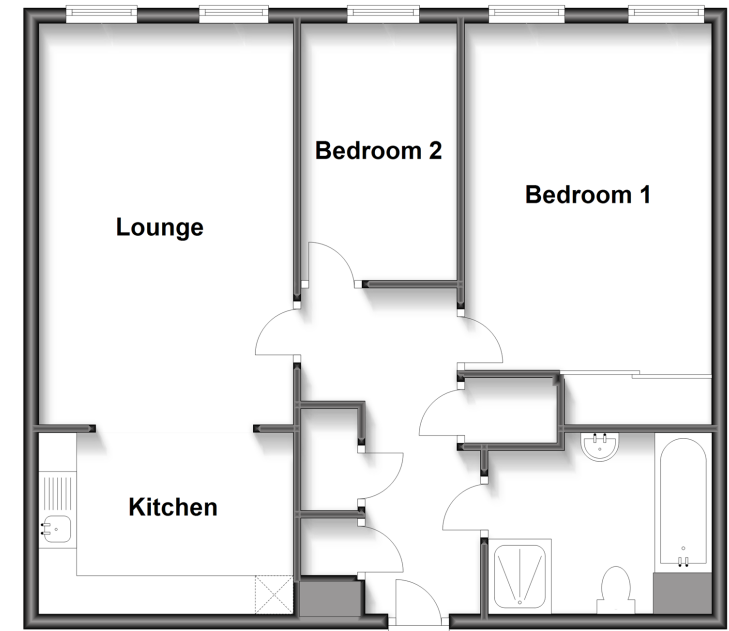
Bedroom 1: 14'8 x 10'5 (4.47m x 3.18m)

Bedroom 2: 10'8 x 6'9 (3.25m x 2.06m)

Bathroom: 9'7 x 7'2 (2.92m x 2.19m)

Third Floor

Approx. 68.3 sq. metres (734.9 sq. feet)



Call Herne Bay - 01227 361226 ■ wardsofkent.co.uk

■ Legal advice should be taken to verify fixtures/fittings, planning, alterations and/or lease details
 ■ Through a Homewise Home For Life Plan people aged 60+ can secure this property for up to 59% less, by purchasing a Lifetime Lease.

■ Appliances & services are untested, dimensions are approximate and floor plans are not to scale