



Price
£250,000

Leasehold

4x  1x  1x 

**Reculver Road,
Herne Bay, Kent, CT6**



Video Tour available

Wards
Helping you move forwards



Main features

- A country house converted into 2 apartments, peppercorn ground rent
- For sale by Modern Auction – T&C's apply
- Subject to an undisclosed Reserve Price
- Buyer's fees apply
- The whole of the ground floor with substantial gardens
- Substantial parking and a garage, outskirts of Beltinge village
- Potential for further development with the necessary planning permissions

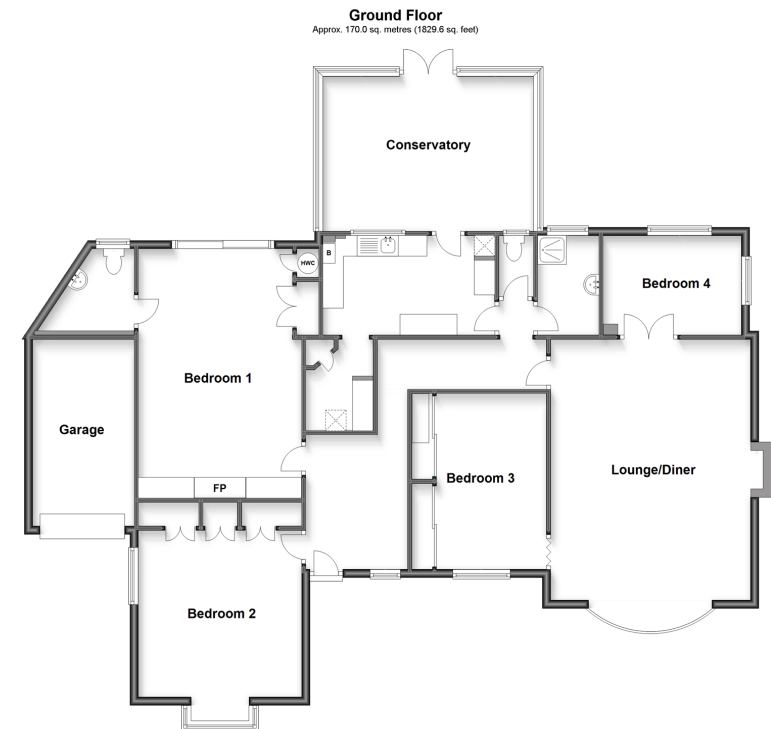
Accommodation

GROUND FLOOR

Entrance Hallway
 Bedroom 2: 11'4 x 8'9 (3.46m x 2.67m)
 Bedroom 1: 18'9 x 13'1 (5.72m x 3.99m)
 En Suite Cloakroom
 Kitchen: 13'6 x 7'9 (4.12m x 2.36m)
 Conservatory
 Utility Room
 Separate toilet
 Shower Room
 Lounge/Diner: 25'0 x 15'9 (7.63m x 4.80m)
 Bedroom 3: 13'1 x 13'1 (3.99m x 3.99m)
 Bedroom 4: 13'9 x 8'8 (4.19m x 2.64m)

OUTSIDE

Front Garden
 Off Road Parking
 Garage
 Rear Garden



Call Herne Bay - 01227 361226 ■ wardsofkent.co.uk

■ Legal advice should be taken to verify fixtures/fittings, planning, alterations and/or lease details

■ Appliances & services are untested, dimensions are approximate and floor plans are not to scale



11237996/20231102/GS/GG