



OVER 60?

Secure this property
for up to **59% less!**

Price

£765,000

Freehold

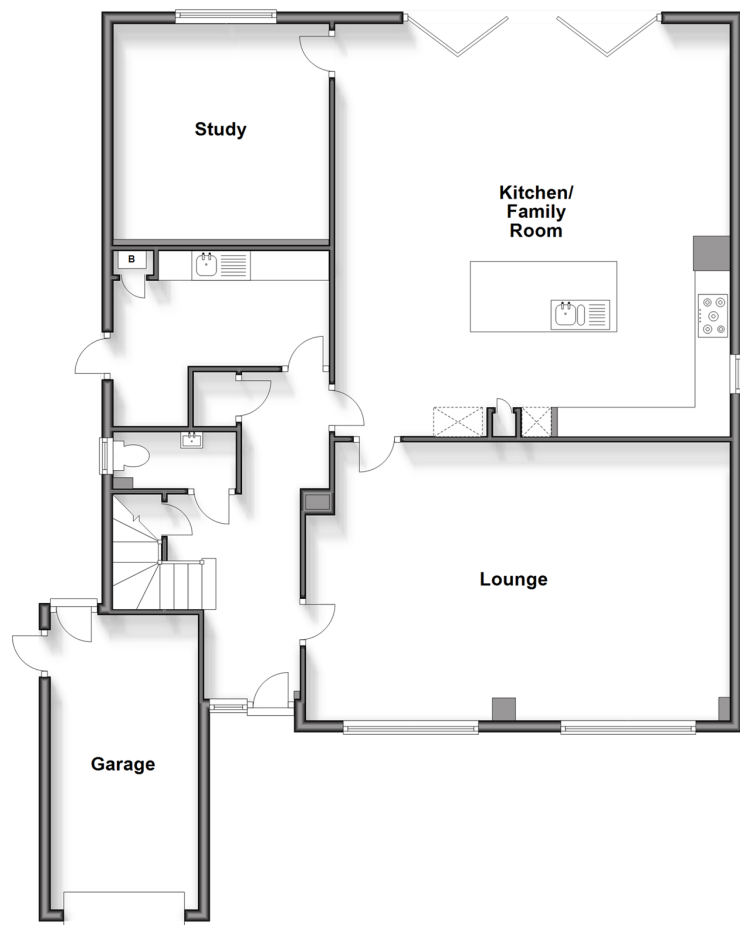
4x  2x  2x 

**Thurlow Avenue, Herne
Bay, Kent, CT6**

Wards
Helping you move forwards

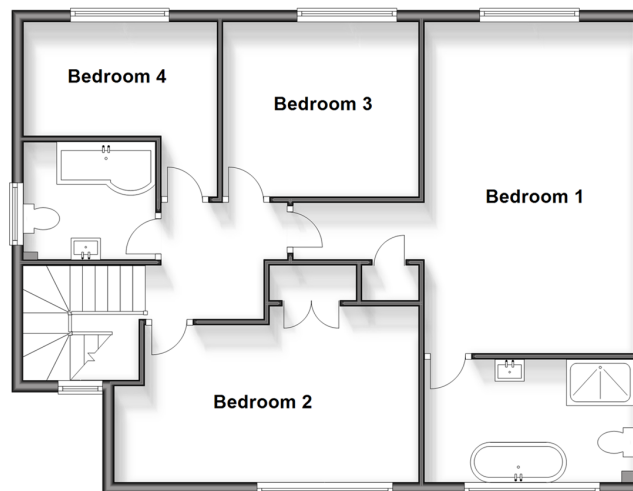
Ground Floor

Approx. 134.3 sq. metres (1445.7 sq. feet)



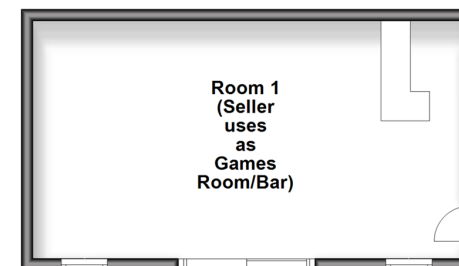
First Floor

Approx. 79.0 sq. metres (849.9 sq. feet)



Outbuilding

Approx. 29.6 sq. metres (318.2 sq. feet)



Accommodation

GROUND FLOOR

Entrance Hallway

Lounge: 23'4 x 15'5 (7.12m x 4.70m)

Cloakroom

Utility Room: 12'0 x 9'8 (3.66m x 2.95m)

Kitchen/Family Room: 23'0 x 19'9 (7.02m x 6.02m)

Study: 11'8 x 11'8 (3.56m x 3.56m)

FIRST FLOOR

Landing

Bathroom

Bedroom 4: 10'4 x 6'4 (3.15m x 1.93m)

Bedroom 3: 10'9 x 9'7 (3.28m x 2.92m)

Bedroom 1: 17'9 x 11'4 (5.41m x 3.46m)

En-suite Bathroom: 11'6 x 6'8 (3.51m x 2.03m)

Bedroom 2: 16'6 x 9'8 (5.03m x 2.95m)

OUTBUILDING

Room 1 (Games Room/Bar)

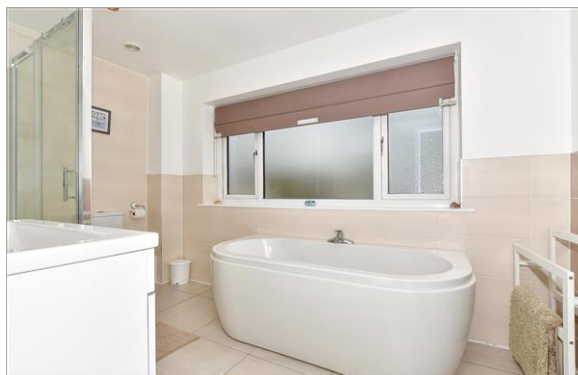
OUTSIDE

Garage

Driveway

Front Garden

Rear Garden



Main features

- Breathtaking refinement throughout
- Versatile layout, coastal location
- Extensively refurbished to a high standard and extended
- Prime setting with large garden and studio/lodge to rear of garden
- Study with option of being used as bedroom 5



Nearest Schools

Primary Schools: Herne Bay Junior School 1.1 miles, Reculver C of E Primary 1.5 miles, Herne C of E Junior School 2.2 miles

Secondary Schools: Herne Bay High School 3.0 miles,



Transport Information

Train Stations: Herne Bay 1.8 miles, Chestfield & Swalecliffe 4.6 miles, Whitstable 6.2 miles



Address

ThurLOW Avenue, Herne Bay, Kent, CT6



Directions

For directions to this property please contact us.



Wards
Helping you move forwards

Call Herne Bay Branch 01227 361226 ■ wardsofkent.co.uk



- Legal advice should be taken to verify fixtures/fittings, planning, alterations and/or lease details
- Appliances & services are untested, dimensions are approximate and floor plans are not to scale
- Through a Homewise Home For Life Plan people aged 60+ can secure this property for up to 59% less, by purchasing a Lifetime Lease.



11238051/20240502/GG/GG