



OVER 60?

Secure this property
for up to **59% less!**

Price

£225,000

Leasehold

2x  2x  1x 

**Talmead Road, Herne
Bay, Kent, CT6**

Wards
Helping you move forwards



Main features

- Larger than average second floor apartment
- En-suite to principal bedroom
- Allocated parking
- Within walking distance of supermarkets and restaurants
- Ideally positioned for those needing quick transport links to Canterbury and London.

Accommodation

SECOND FLOOR

Entrance Hallway

Bedroom 2: 11'3 x 9'6 (3.43m x 2.90m)

Lounge: 20'5 x 11'3 (6.23m x 3.43m)

Kitchen: 13'6 x 5'2 (4.12m x 1.58m)

Bedroom 1: 14'5 x 7'6 (4.40m x 2.29m)

En-suite: 6'9 x 5'4 (2.06m x 1.63m)

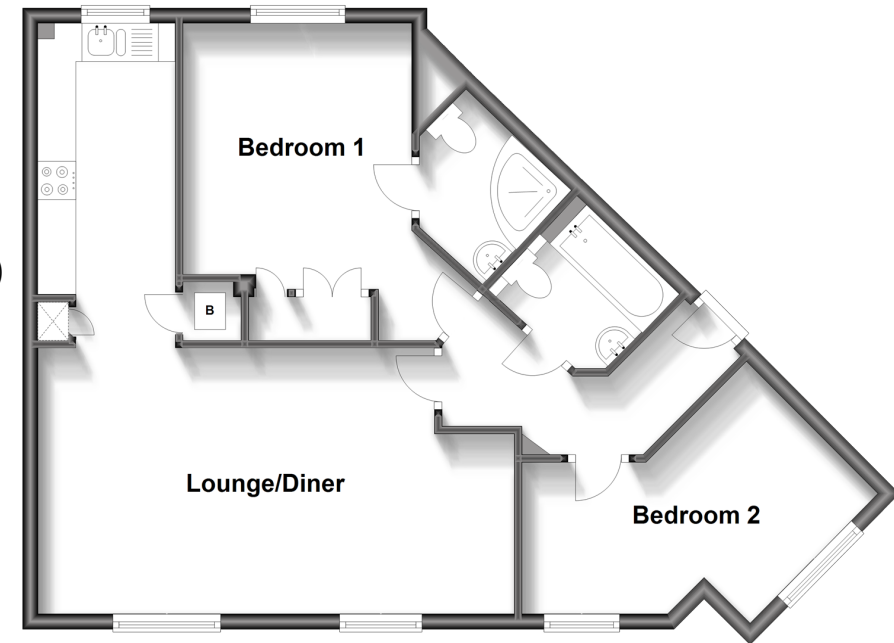
Bathroom: 6'3 x 5'5 (1.91m x 1.65m)

OUTSIDE

Allocated Parking

Second Floor

Approx. 64.4 sq. metres (693.3 sq. feet)



Call Herne Bay - 01227 361226 ■ wardsofkent.co.uk

- Legal advice should be taken to verify fixtures/fittings, planning, alterations and/or lease details
- Appliances & services are untested, dimensions are approximate and floor plans are not to scale
- Through a Homewise Home For Life Plan people aged 60+ can secure this property for up to 59% less, by purchasing a Lifetime Lease.

