



Price

£80,000

Leasehold

1x  1x  1x 

**Oakland Court,
Kings Road,
Herne Bay,
Kent, CT6**

Wards
Helping you move forwards



Main features

- Second floor retirement flat
- Close to the seafront and town centre
- No onward chain
- Lift servicing all floors and communal laundry room
- Communal lounge

Accommodation

SECOND FLOOR

Entrance Hallway

Lounge: 16'5 x 9'4 (5.01m x 2.85m)

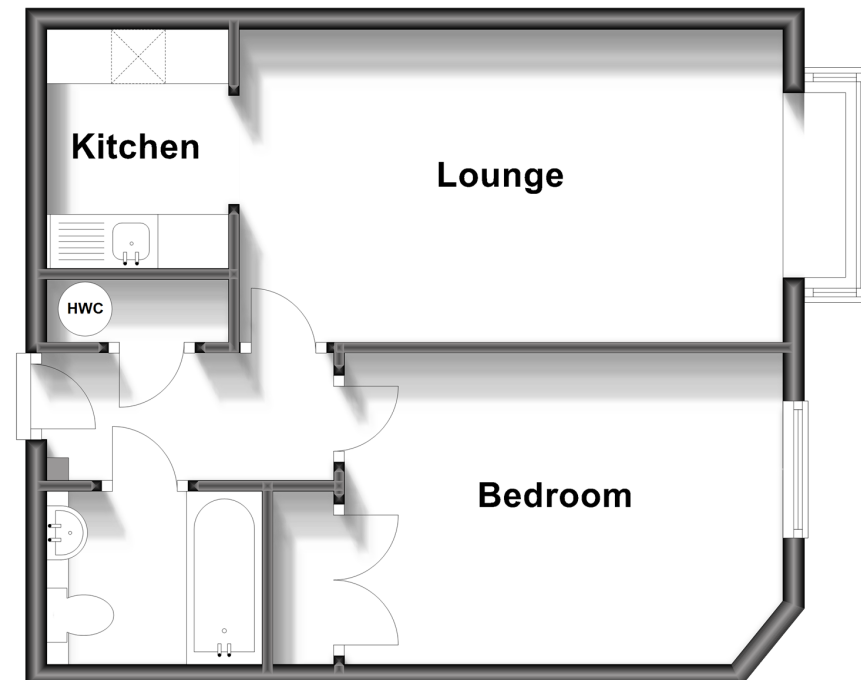
Kitchen: 7'1 x 5'5 (2.16m x 1.65m)

Bedroom: 13'3 x 9'3 (4.04m x 2.82m)

Bathroom

Second Floor

Approx. 40.4 sq. metres (435.1 sq. feet)



Call Herne Bay - 01227 361226 ■ wardsof Kent.co.uk

- Legal advice should be taken to verify fixtures/fittings, planning, alterations and/or lease details
- Appliances & services are untested, dimensions are approximate and floor plans are not to scale



11238120/20231011/GG/GG