



**Price**  
**£535,000**

**Freehold**

5x  3x  2x 

**Northwood House,  
Bullockstone Road,  
Herne Bay, Kent, CT6**

**OVER 60?**

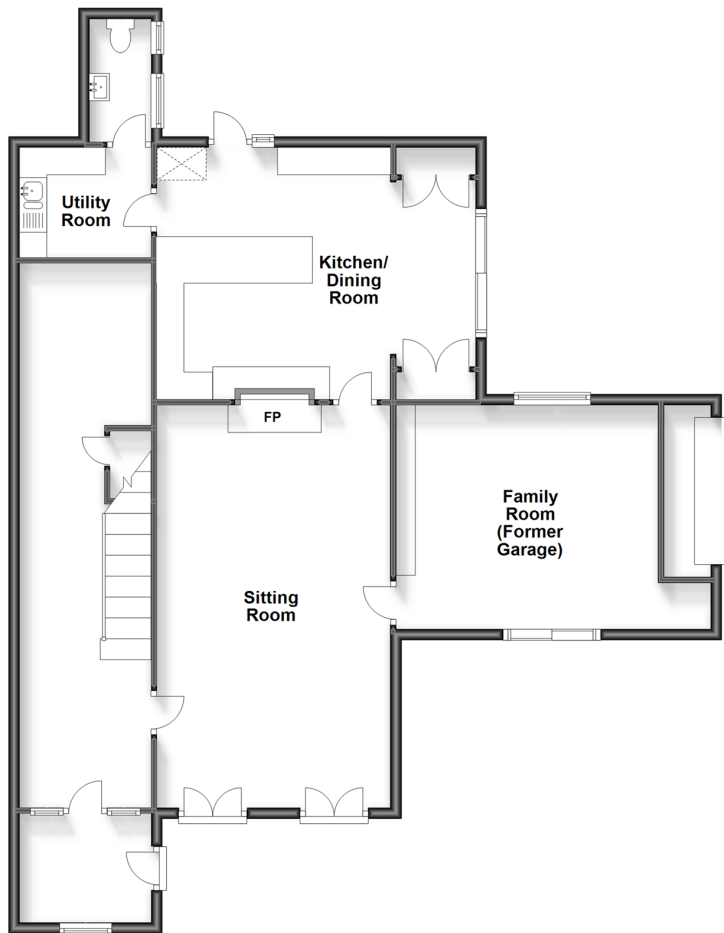
Secure this property  
for up to **59% less!**

*Wards*  
Helping you move forwards



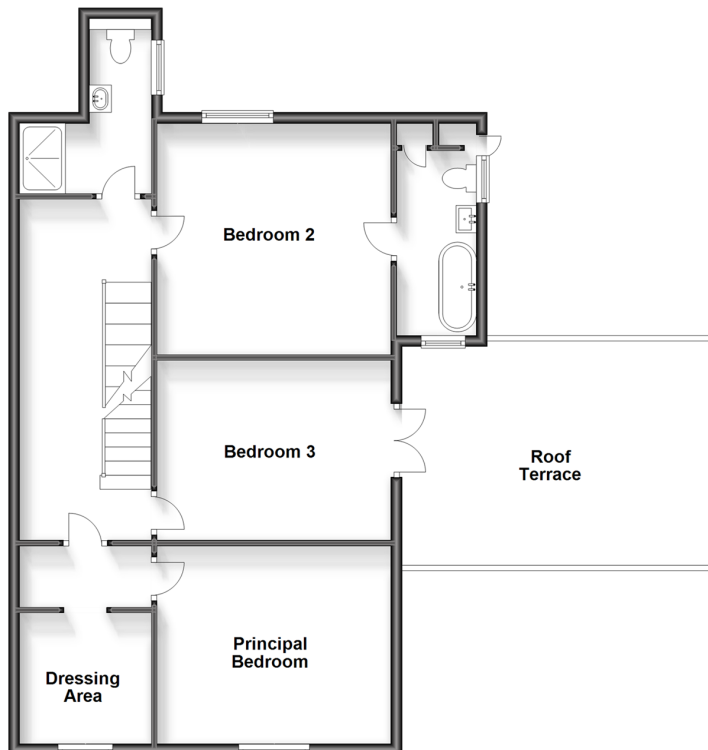
### Ground Floor

Approx. 120.7 sq. metres (1299.4 sq. feet)



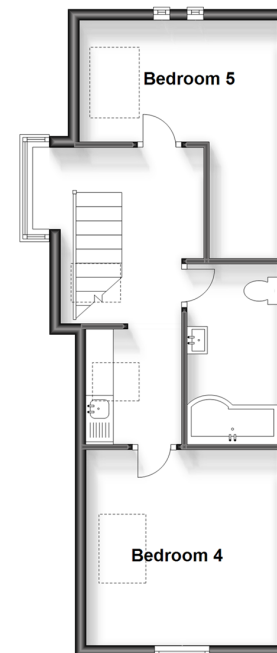
### First Floor

Approx. 85.0 sq. metres (915.1 sq. feet)



### Second Floor

Approx. 42.2 sq. metres (454.0 sq. feet)



## Accommodation

### GROUND FLOOR

Entrance Porch  
Entrance Hall  
Sitting Room: 24'1 x 13'9 (7.35m x 4.19m)  
Kitchen/ Dining Room: 19'6 x 15'0 (5.95m x 4.58m)  
Utility Room: 7'8 x 6'5 (2.34m x 1.96m)  
Cloakroom: 14'4 x 13'8 (4.37m x 4.17m)  
Family Room ( Former Garage)

### FIRST FLOOR

Landing  
Bedroom 2: 14'4 x 13'8 (4.37m x 4.17m)  
En suite  
Shower Room: 9'7 x 7'8 (2.92m x 2.34m)  
Bedroom 3: 14'3 x 10'7 (4.35m x 3.23m)  
Principal Bedroom: 14'4 x 11'8 (4.37m x 3.56m)  
Dressing Area: 7'8 x 7'8 (2.34m x 2.34m)

### SECOND FLOOR

Landing  
Bedroom 4: 14'2 x 11'8 (4.32m x 3.56m)  
Bathroom  
Bedroom 5: 12'0 x 11'6 (3.66m x 3.51m)

### OUTSIDE

Off-road Parking  
Roof Terrace  
Garden



## Main features

- Stunning residence with vast accommodation
- Three floors of elegant styling
- Substantial entrance hall
- The largest property converted from the original manor
- Localised gardens and roof terrace on the first floor.



### Nearest Schools

Primary Schools: Hampton Primary 1.1 miles, Briary Primary 1.4 miles, Herne C of E Junior School 2.1 miles

Secondary Schools: Herne Bay High School 0.5 miles, The Community College Whitstable 4.5 miles, The King's



### Transport Information

Train Stations: Herne Bay 1.5 miles, Chestfield & Swalecliffe 2.7 miles, Whitstable 4.3 miles



### Address

Northwood House, Bullockstone Road, Herne Bay, Kent, CT6



### Directions

For directions to this property please contact us.





Call Herne Bay Branch 01227 361226 ■ [wardsofkent.co.uk](http://wardsofkent.co.uk)



■ Legal advice should be taken to verify fixtures/fittings, planning, alterations and/or lease details ■ Appliances & services are untested, dimensions are approximate and floor plans are not to scale  
■ Through a Homewise Home For Life Plan people aged 60+ can secure this property for up to 59% less, by purchasing a Lifetime Lease.



11238153/20240409/AW/GG