



Price
£825,000

Freehold

5x  2x  3x 

**Topsham House,
Parsonage Road, Herne
Bay, Kent, CT6**

OVER 60?

Secure this property
for up to **59% less!**

Wards
Helping you move forwards

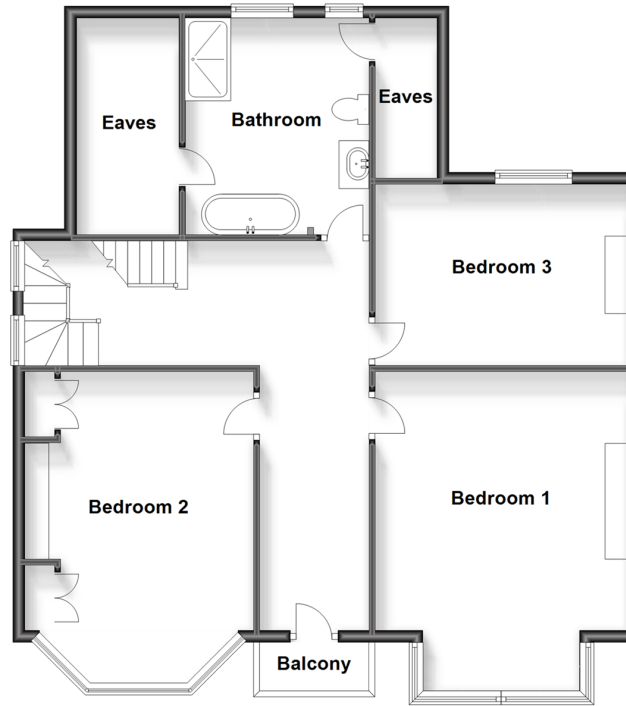
Ground Floor

Approx. 138.9 sq. metres (1494.9 sq. feet)



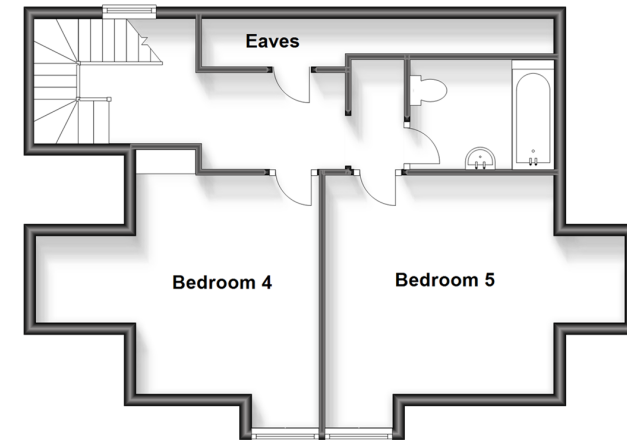
Split Level First Floor

Approx. 94.8 sq. metres (1020.8 sq. feet)



Second Floor

Approx. 53.0 sq. metres (570.7 sq. feet)



Accommodation

GROUND FLOOR

Entrance Hallway

Dining Room: 18'9 x 12'4 (5.72m x 3.76m)

Sitting Room: 17'9 x 14'7 (5.41m x 4.45m)

Snug: 13'9 x 9'9 (4.19m x 2.97m)

Kitchen / Breakfast Area: 23'5 x 18'7 (7.14m x 5.67m)

Utility Room: 6'7 x 5'8 (2.01m x 1.73m)

Cloakroom

FIRST FLOOR

Landing

Bedroom 1: 17'9 x 14'4 (5.41m x 4.37m)

Bedroom 2: 17'2 x 12'6 (5.24m x 3.81m)

Bedroom 3: 14'4 x 10'1 (4.37m x 3.08m)

First Floor Bathroom: 11'2 x 10'2 (3.41m x 3.10m)

SECOND FLOOR

Landing

Bedroom 4

Bedroom 5

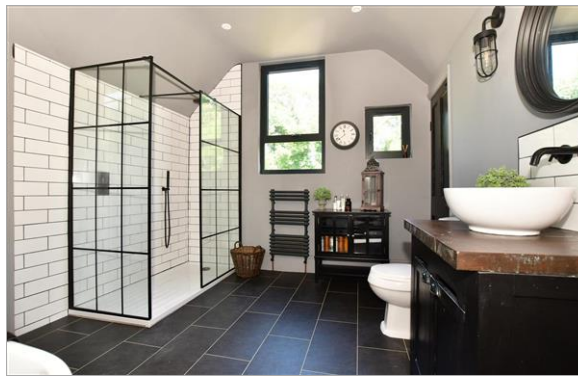
Second Floor Bathroom: 7'9 x 6'1 (2.36m x 1.86m)

OUTSIDE

Garage

Driveway

Rear Garden



Main features

- Vast reception space with a versatile layout
- Attractive gardens and garage to side
- Arranged over 3 floors
- Classic Edwardian styling in a private setting
- A short walk from the town centre and beach



Nearest Schools

Primary Schools: Herne Bay Junior School 0.6 miles, Herne C of E Junior School 1.2 miles, Reculver C of E Primary 1.7 miles

Secondary Schools: Herne Bay High School 1.8 miles, The



Transport Information

Train Stations: Herne Bay 1.0 miles, Chestfield & Swalecliffe 3.4 miles, Whitstable 5.0 miles



Address

Topsham House, Parsonage Road, Herne Bay, Kent, CT6



Directions

For directions to this property please contact us.



Call Herne Bay Branch 01227 361226 ■ wardsofkent.co.uk



- Legal advice should be taken to verify fixtures/fittings, planning, alterations and/or lease details
- Appliances & services are untested, dimensions are approximate and floor plans are not to scale
- Through a Homewise Home For Life Plan people aged 60+ can secure this property for up to 59% less, by purchasing a Lifetime Lease.



11238170/20230823/GG/GG