



Price
£115,000

Leasehold

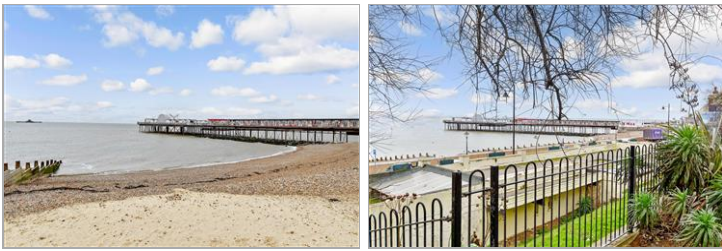
1x  1x  1x 

**Chislet Court,
Pier Avenue, Herne Bay,
Kent, CT6**

OVER 60?

Secure this property
for up to **59% less!**

Wards
Helping you move forwards



Main features

- First floor retirement flat
- Lift servicing all floors
- Lease with over 150 years left to run
- In fine decorative order, vacant possession
- Well maintained with some residents parking available

Accommodation

FIRST FLOOR

Entrance Hallway

Bathroom

Bedroom: 12'6 x 9'2 (3.81m x 2.80m)

Lounge: 16'7 x 10'3 (5.06m x 3.13m)

Kitchen: 7'6 x 7'6 (2.29m x 2.29m)

OUTSIDE

Resident Parking

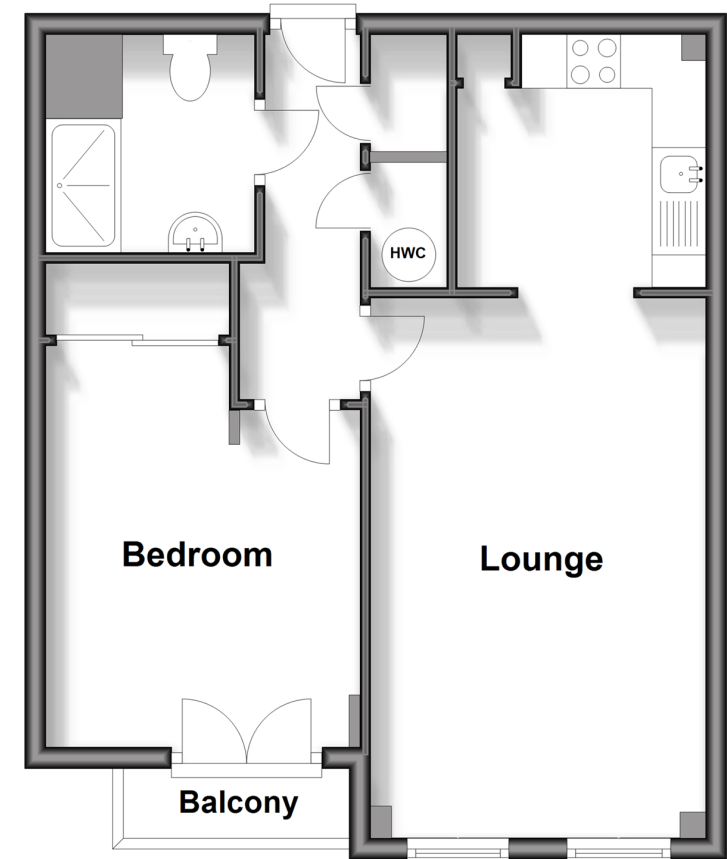
Communal Garden

Communal Roof Terrace

Communal Conservatory

First Floor

Approx. 43.5 sq. metres (468.1 sq. feet)



Call Herne Bay - 01227 361226 ■ wardsofkent.co.uk

- Legal advice should be taken to verify fixtures/fittings, planning, alterations and/or lease details
- Appliances & services are untested, dimensions are approximate and floor plans are not to scale
- Through a Homewise Home For Life Plan people aged 60+ can secure this property for up to 59% less, by purchasing a Lifetime Lease.



11238217/20240213/GS/GG