



OVER 60?

Secure this property
for up to **59% less!**

Price

£850,000

Freehold

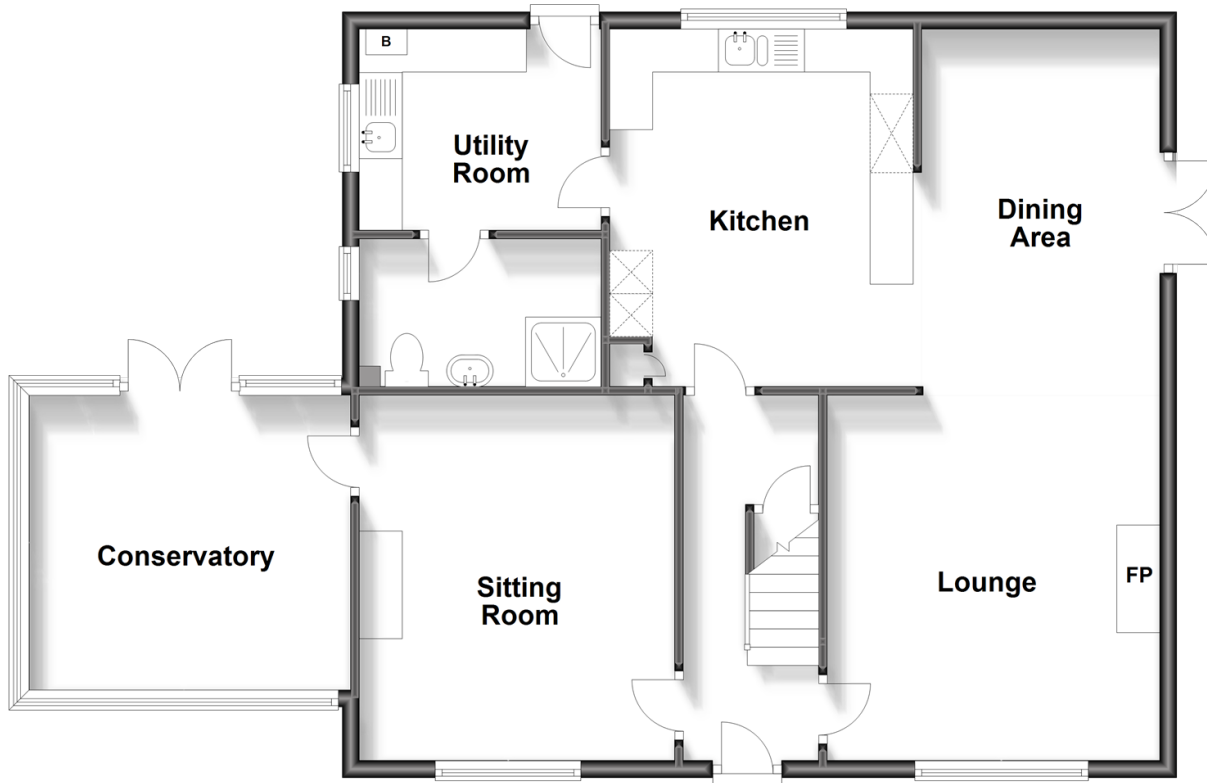
4x  3x  2x 

**Highstead, Chislet,
Canterbury, Kent, CT3**

Wards
Helping you move forwards

Ground Floor

Approx. 92.3 sq. metres (993.0 sq. feet)



Split Level First Floor

Approx. 79.1 sq. metres (851.6 sq. feet)



Accommodation

GROUND FLOOR

Entrance Hallway
 Dining Area/Lounge: 28'6 x 9'11 (8.69m x 3.02m)
 Kitchen: 13'7 x 10'3 (4.14m x 3.13m)
 Utility Room: 9'2 x 7'7 (2.80m x 2.31m)
 Shower Room
 Sitting Room: 14'9 x 12'2 (4.50m x 3.71m)
 Conservatory: 12'7 x 12'6 (3.84m x 3.81m)

FIRST FLOOR

Landing
 Bedroom 2: 13'7 x 12'2 (4.14m x 3.71m)
 Bedroom 3: 14'1 x 12'4 (4.30m x 3.76m)
 Bedroom 1: 14'2 x 11'6 (4.32m x 3.51m)
 Ensuite
 Bathroom
 Bedroom 4: 12'5 x 8'6 (3.79m x 2.59m)

OUTSIDE

Double Garage
 Driveway
 Wrap Around Garden
 Summer House / Workshop



Main features

- Large Dining area and Lounge
- Large double garage and gravel driveway
- Oil fired central heating
- Separate utility room leading to downstairs shower room
- Bedroom 1 with ensuite shower room



Nearest Schools

Primary Schools: Reculver C of E Primary 1.1 miles, Chislet C of E Primary 1.3 miles, Hoath Primary 1.3 miles

Secondary Schools: Herne Bay High School 2.8 miles, Spires Academy 3.7 miles, The Archbishop's School 5.9



Transport Information

Train Stations: Herne Bay 2.7 miles, Sturry 4.5 miles, Chestfield & Swalecliffe 4.8 miles



Address

Highstead, Chislet, Canterbury, Kent, CT3



Directions

For directions to this property please contact us.



Call Herne Bay Branch 01227 361226 ■ wardsofkent.co.uk



- Legal advice should be taken to verify fixtures/fittings, planning, alterations and/or lease details
- Appliances & services are untested, dimensions are approximate and floor plans are not to scale
- Through a Homewise Home For Life Plan people aged 60+ can secure this property for up to 59% less, by purchasing a Lifetime Lease.



11238219/20231101/GS/GG