



**OVER 60?**

Secure this property  
for up to **59% less!**

**Price**

**£350,000**

**Freehold**

2x  1x  1x 

**Strode Park Road,  
Herne, Herne Bay, Kent,  
CT6**

*Wards*  
Helping you move forwards





## Main features

- Situated in the outskirts of Herne village
- Large lounge/diner with views
- Two double bedrooms, fitted kitchen
- Two tiered garden, large driveway
- Gas heating and solar panels generating electric

## Accommodation

### GROUND FLOOR

Entrance Hall

Lounge: 14'6 x 11'0 (4.42m x 3.36m)

Dining Area: 11'9 x 8'3 (3.58m x 2.52m)

Kitchen : 13'0 x 11'9 (3.97m x 3.58m)

Cloakroom

Bedroom 1: 13'8 x 12'4 (4.17m x 3.76m)

Bedroom 2: 10'9 x 10'4 (3.28m x 3.15m)

Bathroom

### OUTSIDE

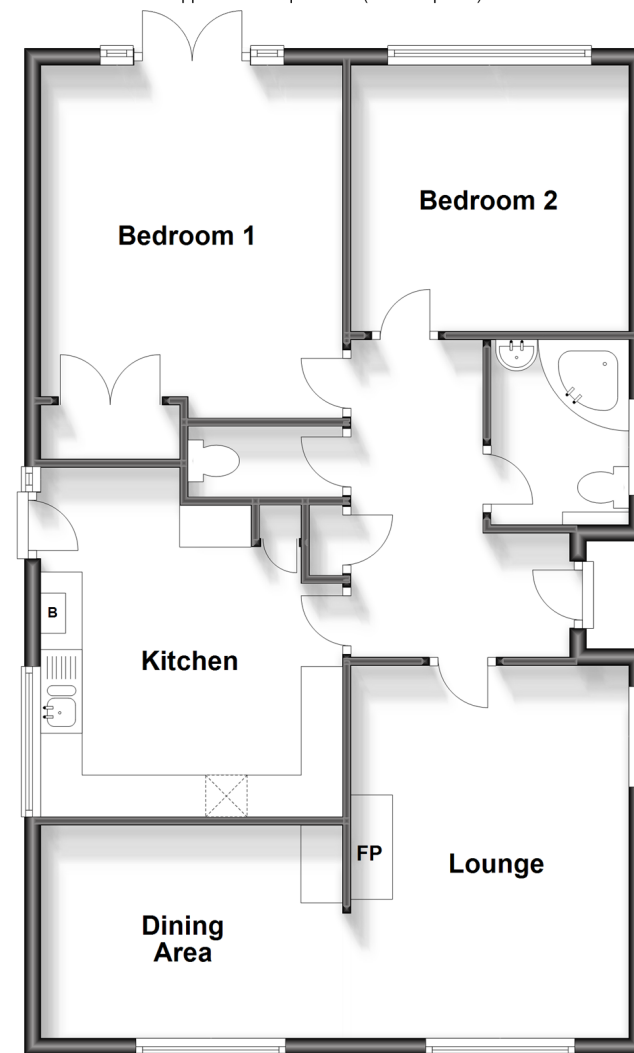
Driveway

Front Garden

Rear Garden

## Ground Floor

Approx. 81.4 sq. metres (876.5 sq. feet)



**Call Herne Bay - 01227 361226 ■ [wardsofkent.co.uk](http://wardsofkent.co.uk)**

- Legal advice should be taken to verify fixtures/fittings, planning, alterations and/or lease details
- Appliances & services are untested, dimensions are approximate and floor plans are not to scale
- Through a Homewise Home For Life Plan people aged 60+ can secure this property for up to 59% less, by purchasing a Lifetime Lease.



11238281/20240322/GS/GG