



Price
£190,000

Leasehold

1x  1x  1x 

**Central Parade, Herne
Bay, Kent, CT6**

OVER 60?

Secure this property
for up to **59% less!**

Wards
Helping you move forwards



Main features

- Breathtaking coastal sea views
- Easy access to the town centre
- Stunning condition with large kitchen/ lounge
- Gas central heating, second floor with elevated view
- Perfect rental investment or 2nd home

Accommodation

SECOND FLOOR

Entrance Hallway

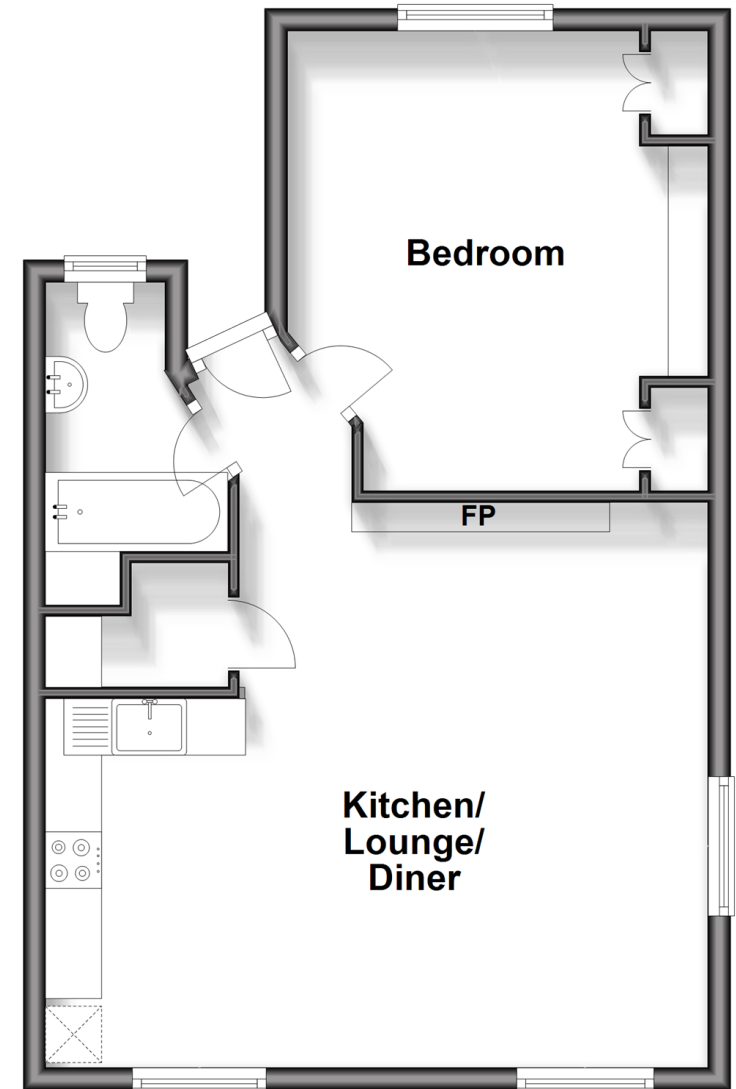
Bedroom: 13'7 x 11'5 (4.14m x 3.48m)

Kitchen/Lounge/Diner: 19'4 x 16'5 (5.90m x 5.01m)

Bathroom

Second Floor

Approx. 19.7 sq. metres (212.5 sq. feet)



Call Herne Bay - 01227 361226 ■ wardsofkent.co.uk

- Legal advice should be taken to verify fixtures/fittings, planning, alterations and/or lease details
- Appliances & services are untested, dimensions are approximate and floor plans are not to scale
- Through a Homewise Home For Life Plan people aged 60+ can secure this property for up to 59% less, by purchasing a Lifetime Lease.