



Price
£295,000

Freehold

3x  1x  1x 

**Fleetwood Avenue,
Herne Bay, Kent, CT6**

OVER 60?

Secure this property
for up to **59% less!**

Wards
Helping you move forwards



Main features

- Close to town centre and train station
- Vacant possession, original features
- Semi-detached with extended kitchen area
- Gas heating and double glazing
- First floor bathroom, 3 large bedrooms

Accommodation

GROUND FLOOR

Entrance Hallway

Lounge: 13'7 x 10'6 (4.14m x 3.20m)

Dining Area: 14'7 x 11'4 (4.45m x 3.46m)

Kitchen: 14'2 x 9'11 (4.32m x 3.02m)

Conservatory

FIRST FLOOR

Landing

Bedroom 1: 14'2 x 11'4 (4.32m x 3.46m)

Bedroom 2: 11'3 x 9'5 (3.43m x 2.87m)

Bathroom

Bedroom 3: 8'9 x 6'5 (2.67m x 1.96m)

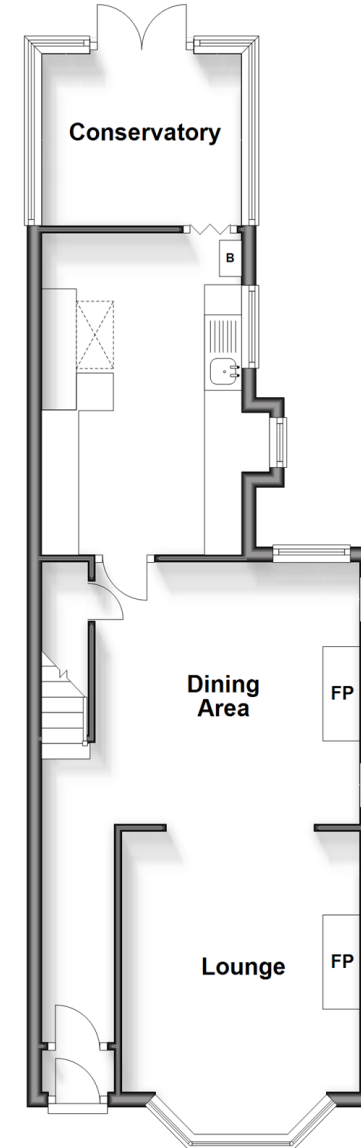
OUTSIDE

Front Garden

Rear Garden

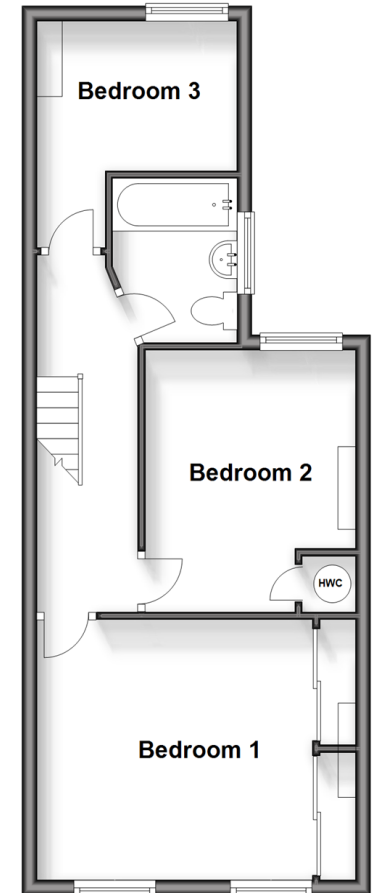
Ground Floor

Approx. 49.0 sq. metres (527.7 sq. feet)



First Floor

Approx. 42.0 sq. metres (451.7 sq. feet)



Call Herne Bay - 01227 361226 ■ wardsofkent.co.uk

- Legal advice should be taken to verify fixtures/fittings, planning, alterations and/or lease details
- Appliances & services are untested, dimensions are approximate and floor plans are not to scale
- Through a Homewise Home For Life Plan people aged 60+ can secure this property for up to 59% less, by purchasing a Lifetime Lease.



11238295/20240514/AT/GG