



Guide Price
£240,000

Leasehold

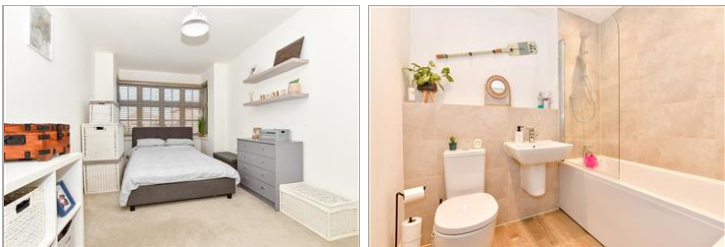
2x  2x  1x 

**Sidney Grove, Herne
Bay, Kent, CT6**

OVER 60?

Secure this property
for up to **59% less!**

Wards
Helping you move forwards



Main features

- Popular Redrow Estate
- One allocated parking space and visitors bays available
- Immaculately presented throughout
- Stunning open plan kitchen into lounge
- Generously proportioned rooms

Accommodation

GROUND FLOOR

Entrance Hallway

Bathroom: 6'9 x 6'2 (2.06m x 1.88m)

Kitchen/Diner: 21'6 x 12'3 (6.56m x 3.74m)

Lounge: 25'9 x 10'9 (7.85m x 3.28m)

Bedroom 2: 16'3 x 9'0 (4.96m x 2.75m)

Bedroom 1: 13'9 x 11'4 (4.19m x 3.46m)

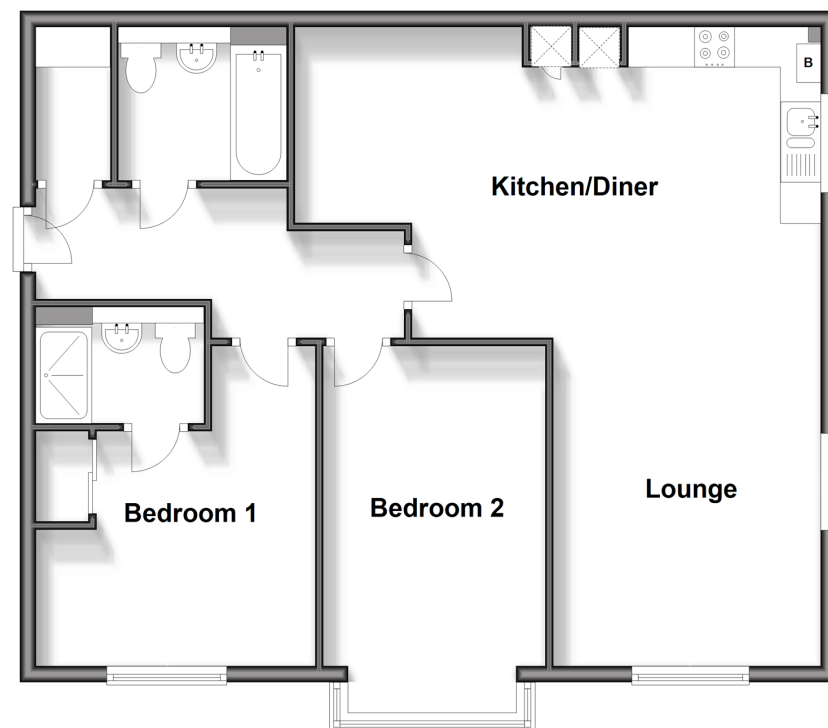
En-suite shower room

OUTSIDE

Allocated Parking Space

Ground Floor

Approx. 78.5 sq. metres (844.5 sq. feet)



Call Herne Bay - 01227 361226 ■ wardsofkent.co.uk

- Legal advice should be taken to verify fixtures/fittings, planning, alterations and/or lease details
- Appliances & services are untested, dimensions are approximate and floor plans are not to scale
- Through a Homewise Home For Life Plan people aged 60+ can secure this property for up to 59% less, by purchasing a Lifetime Lease.



11238298/20240322/GS/AT