



Price
£485,000

Freehold

4x  2x  1x 

**Reculver Road, Herne
Bay, Kent, CT6**

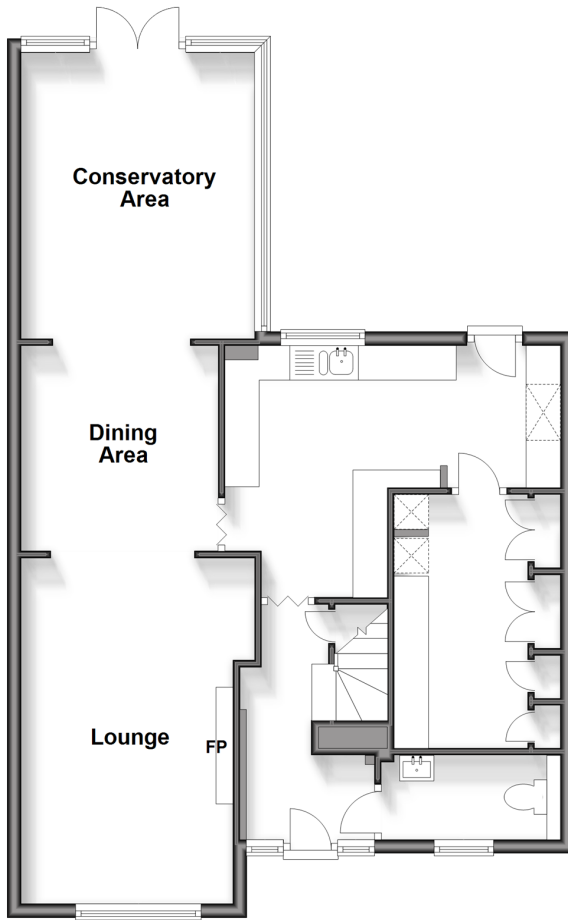
OVER 60?

Secure this property
for up to **59% less!**

Wards
Helping you move forwards

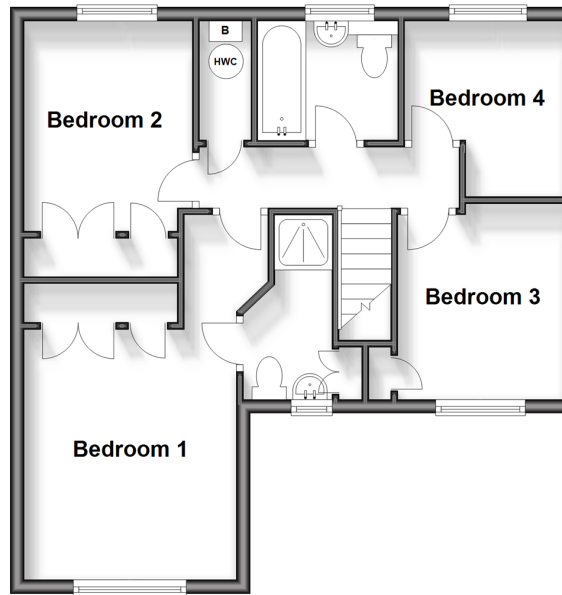
Ground Floor

Approx. 73.4 sq. metres (790.3 sq. feet)



First Floor

Approx. 51.0 sq. metres (549.0 sq. feet)



Accommodation

GROUND FLOOR

Entrance Hallway
Cloakroom
Kitchen: 16'3 x 12'1 (4.96m x 3.69m)
Utility Room: 12'1 x 8'6 (3.69m x 2.59m)
Lounge: 16'5 x 11'2 (5.01m x 3.41m)
Dining Area: 9'9 x 9'5 (2.97m x 2.87m)
Conservatory Area: 13'3 x 11'2 (4.04m x 3.41m)

FIRST FLOOR

Landing
Bedroom 3: 8'7 x 7'10 (2.62m x 2.39m)
Bedroom 4: 8'1 x 8'0 (2.47m x 2.44m)
Bathroom
Bedroom 2: 10'0 x 8'1 (3.05m x 2.47m)
Bedroom 1: 12'0 x 10'1 (3.66m x 3.08m)
En-suite Shower Room

OUTSIDE

Driveway
Log Cabin
Summer House
Front Garden
Rear Garden



Main features

- Prime Herne Bay location
- Parking for multiple cars
- In immaculate condition throughout
- Beautiful rear garden with log cabin and summer house
- Ample living space downstairs and many modern conveniences



Nearest Schools

Primary Schools: Herne Bay Junior School 0.8 miles, Herne C of E Junior School 1.1 miles, Reculver C of E Primary 1.1 miles

Secondary Schools: Herne Bay High School 1.5 miles,



Transport Information

Train Stations: Herne Bay 1.3 miles, Chestfield & Swalecliffe 3.5 miles, Sturry 4.8 miles



Address

Reculver Road, Herne Bay, Kent, CT6



Directions

For directions to this property please contact us.



Wards
Helping you move forwards

Call Herne Bay Branch 01227 361226 ■ wardsofkent.co.uk



■ Legal advice should be taken to verify fixtures/fittings, planning, alterations and/or lease details ■ Appliances & services are untested, dimensions are approximate and floor plans are not to scale
■ Through a Homewise Home For Life Plan people aged 60+ can secure this property for up to 59% less, by purchasing a Lifetime Lease.



11238300/20240402/GS/AT