



Price

£195,000

Leasehold

2x  2x  1x 

**Ryder Court, Herne Bay,
Kent, CT6**

OVER 60?

Secure this property
for up to **59% less!**

Wards
Helping you move forwards



Main features

- Property sold with no onward chain
- Easy access to the A299 Thanet Way
- Allocated parking space with visitors bays available
- Immaculate presentation throughout
- Ground floor living with open plan kitchen lounge

Accommodation

GROUND FLOOR

Entrance Hallway

Kitchen/Lounge: 16'0 x 15'9 (4.88m x 4.80m)

Bedroom 1: 13'3 x 10'3 (4.04m x 3.13m)

En-suite Shower Room: 6'6 x 5'8 (1.98m x 1.73m)

Bathroom: 6'5 x 6'2 (1.96m x 1.88m)

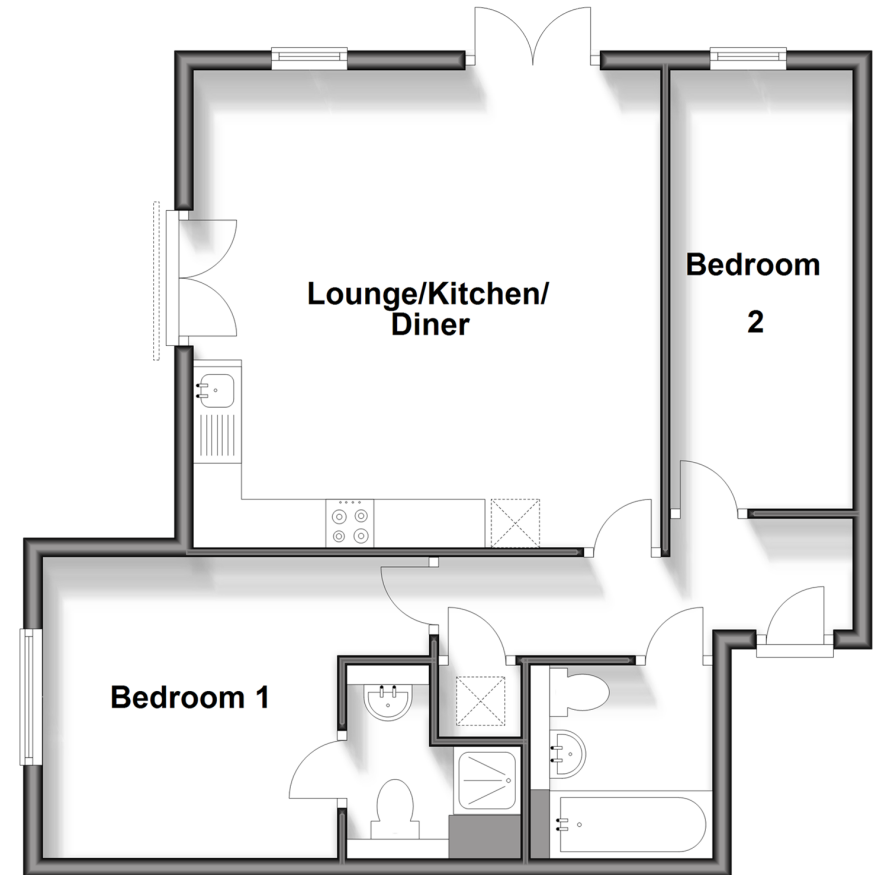
Bedroom 2: 14'8 x 6'2 (4.47m x 1.88m)

OUTSIDE

Allocated Parking
Communal Garden

Ground Floor

Approx. 57.4 sq. metres (618.0 sq. feet)



Call Herne Bay - 01227 361226 ■ wardsofkent.co.uk

- Legal advice should be taken to verify fixtures/fittings, planning, alterations and/or lease details
- Appliances & services are untested, dimensions are approximate and floor plans are not to scale
- Through a Homewise Home For Life Plan people aged 60+ can secure this property for up to 59% less, by purchasing a Lifetime Lease.



11238329/20240322/GS/AT