



Price

£475,000

Freehold

3x  2x  1x 

**Daimler Avenue, Herne
Bay, Kent, CT6 6AG**

Wards
Helping you move forwards



Main features

- **Refurbished and Extended detached Bungalow**
- **3 Double Bedrooms, one en-suite**
- **Integrated Garage, Block paved Driveway**
- **Set in Popular Studd Hill location**
- **No Chain**

Accommodation

GROUND FLOOR

Entrance Hallway

Bedroom 1: 13'6 x 12'6 (4.12m x 3.81m)

En-suite

Bedroom 3: 12'9 x 9'7 (3.89m x 2.92m)

Bedroom 2: 12'6 x 7'9 (3.81m x 2.36m)

Lounge/Kitchen/Diner: (L-shaped) 18'8 x 13'6 (5.69m x 4.12m) plus 15'7 x 14'7 (4.75m x 4.45m)

Bathroom

OUTSIDE

Garage

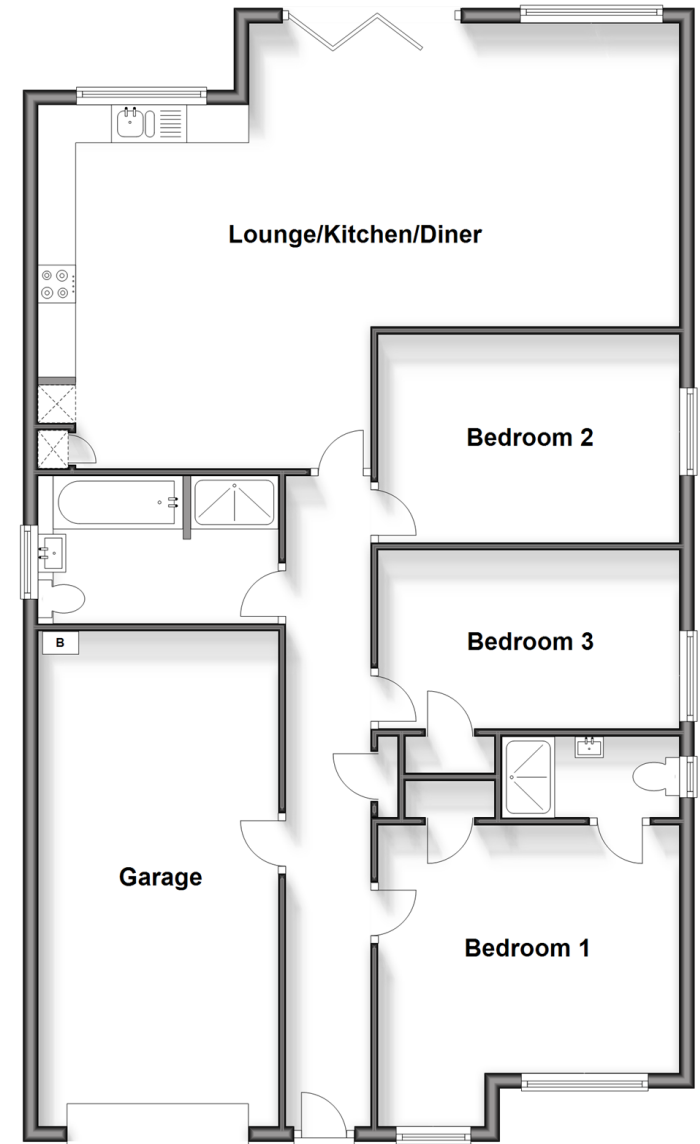
Driveway

Front Garden

Rear Garden

Ground Floor

Approx. 119.2 sq. metres (1282.7 sq. feet)



Call Herne Bay - 01227 361226 ■ wardsofkent.co.uk

- Legal advice should be taken to verify fixtures/fittings, planning, alterations and/or lease details
- Appliances & services are untested, dimensions are approximate and floor plans are not to scale



11238347/20240322/GS/GG