



Price

£220,000

Leasehold

2x  1x  1x 

**St. Mary's Court,
Station Road,
Herne Bay,
Kent, CT6**

OVER 60?

Secure this property
for up to **59% less!**

Wards
Helping you move forwards



Main features

- Prestigious building, close to railway station
- Vast accommodation, great condition
- Ground floor with lift to all floors
- Vacant possession, residents and visitors parking
- Secure entry phone system and communal gardens

Accommodation

SPLIT LEVEL LOWER GROUND FLOOR

Entrance Hallway

Bedroom 2: 11'1 x 10'1 (3.38m x 3.08m)

Bathroom

Lounge/Diner: 20'7 x 17'10 (6.28m x 5.44m)

Bedroom 1: 11'2 x 10'7 (3.41m x 3.23m)

Walk in wardrobe: 10'2 x 5'8 (3.10m x 1.73m)

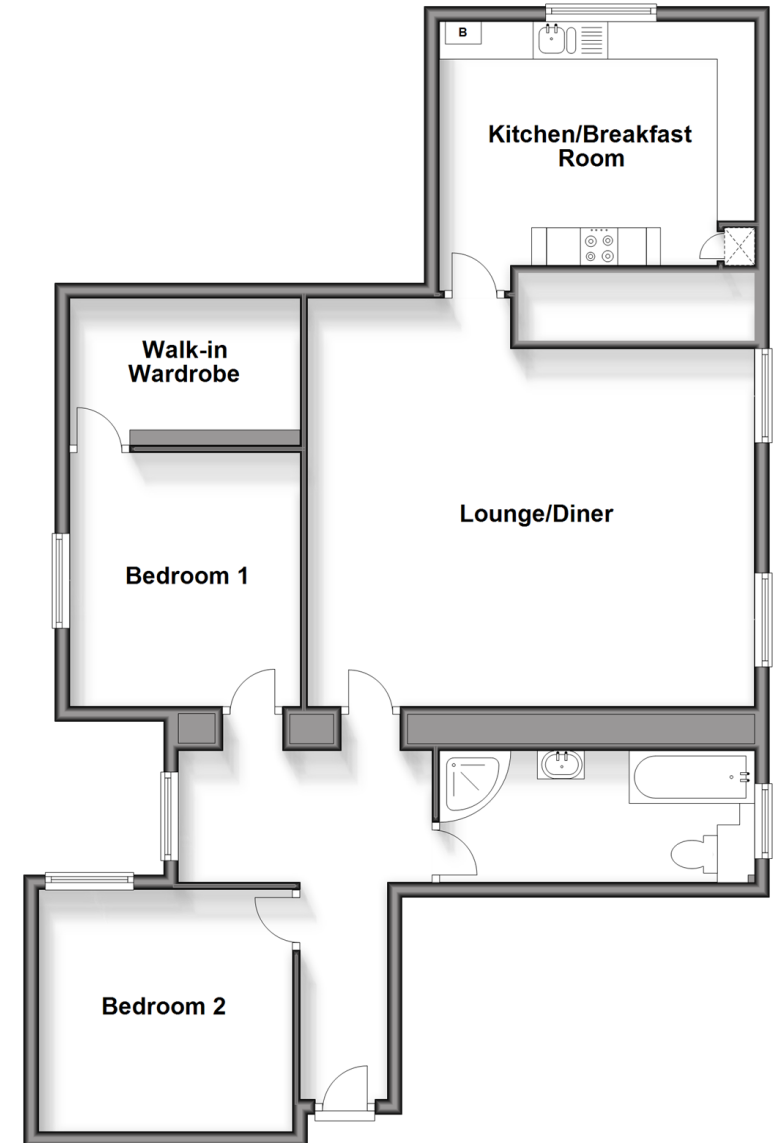
Kitchen/Breakfast Room: 14'0 x 10'8 (4.27m x 3.25m)

OUTSIDE

Residents Parking
Communal Gardens

Split Level Lower Ground Floor

Approx. 98.2 sq. metres (1056.6 sq. feet)



Call Herne Bay - 01227 361226 ■ wardsofkent.co.uk

- Legal advice should be taken to verify fixtures/fittings, planning, alterations and/or lease details
- Appliances & services are untested, dimensions are approximate and floor plans are not to scale
- Through a Homewise Home For Life Plan people aged 60+ can secure this property for up to 59% less, by purchasing a Lifetime Lease.



11238353/20240408/GS/GG