



OVER 60?

Secure this property
for up to **59% less!**

Price

£460,000

Freehold

3x  2x  2x 

**Broomfield Road, Herne
Bay, Kent, CT6**

Wards
Helping you move forwards



Main features

- Situated in popular Broomfield location
- Stunning corner plot
- Driveway with off-road parking for multiple cars
- Loft room with character features
- Close to local amenities

Accommodation

GROUND FLOOR

Front Porch
 Lounge: 23'5 x 11'10 (7.14m x 3.61m)
 Dining Room: 12'3 x 8'9 (3.74m x 2.67m)
 Side Porch
 Entrance Hallway
 Kitchen: 13'9 x 10'1 (4.19m x 3.08m)
 Shower Room: 10'8 x 5'6 (3.25m x 1.68m)
 Bedroom 2: 13'8 x 8'8 (4.17m x 2.64m)
 Bedroom 3: 13'9 x 8'8 (4.19m x 2.64m)
 Utility Room: 8'6 x 5'4 (2.59m x 1.63m)
 Family Room: 18'3 x 8'3 (5.57m x 2.52m)
 Additional Room : 11'10 x 7'4 (3.61m x 2.24m)

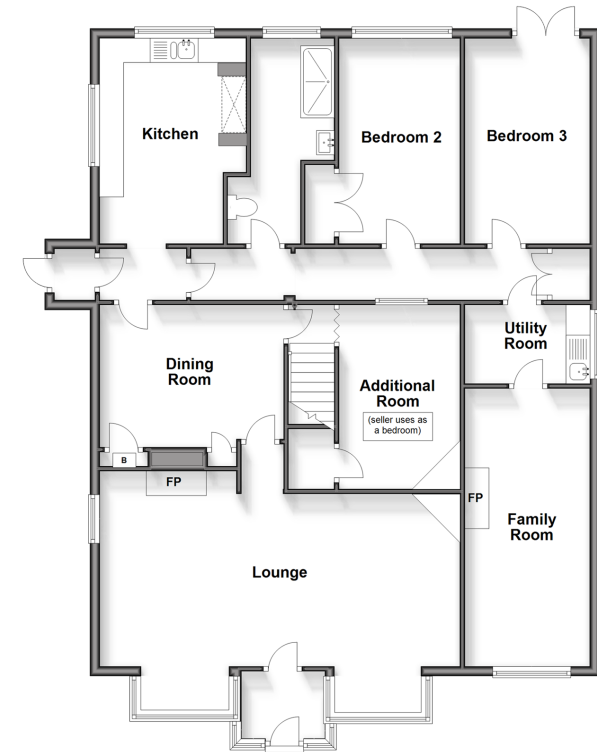
FIRST FLOOR

Bedroom 1: 20'8 x 13'7 (6.30m x 4.14m)
 Shower Room: 9'4 x 3'4 (2.85m x 1.02m)

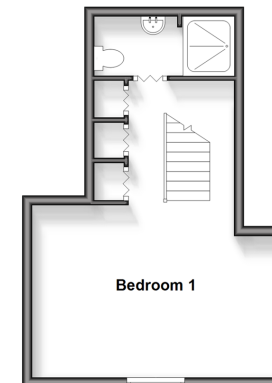
OUTSIDE

Driveway
 Front Garden
 Rear Garden

Ground Floor
 Approx. 137.1 sq. metres (1476.2 sq. feet)



First Floor
 Approx. 29.0 sq. metres (312.1 sq. feet)



Call Herne Bay - 01227 361226 ■ wardsofkent.co.uk

- Legal advice should be taken to verify fixtures/fittings, planning, alterations and/or lease details
- Appliances & services are untested, dimensions are approximate and floor plans are not to scale
- Through a Homewise Home For Life Plan people aged 60+ can secure this property for up to 59% less, by purchasing a Lifetime Lease.



11238360/20240208/GS/AT