



**OVER 60?**

Secure this property  
for up to **59% less!**

**Price**

**£485,000**

**Freehold**

4x  2x  1x 

**Cooper Drive, Herne  
Bay, Kent, CT6**

*Wards*  
Helping you move forwards





## Main features

- Redrow built Shaftsbury Style
- NHBC guarantee, garage to rear
- Enclosed walled garden
- Downstairs cloakroom, en-suite shower room to bedroom 1
- Stunning family home, close to Thanet Way

## Accommodation

### GROUND FLOOR

Entrance Hallway

Lounge: 22'3 x 11'6 (6.79m x 3.51m)

Cloakroom

Kitchen: 22'6 x 11'0 (6.86m x 3.36m)

Utility Room

### FIRST FLOOR

Landing

Bedroom 1: 12'0 x 11'6 (3.66m x 3.51m)

En-Suite Shower Room

Bedroom 4: 11'8 x 9'2 (3.56m x 2.80m)

Bathroom: 11'5 x 6'3 (3.48m x 1.91m)

Bedroom 2: 11'4 x 6'9 (3.46m x 2.06m)

Bedroom 3: 11'6 x 8'6 (3.51m x 2.59m)

OUTBUILDING

Garage

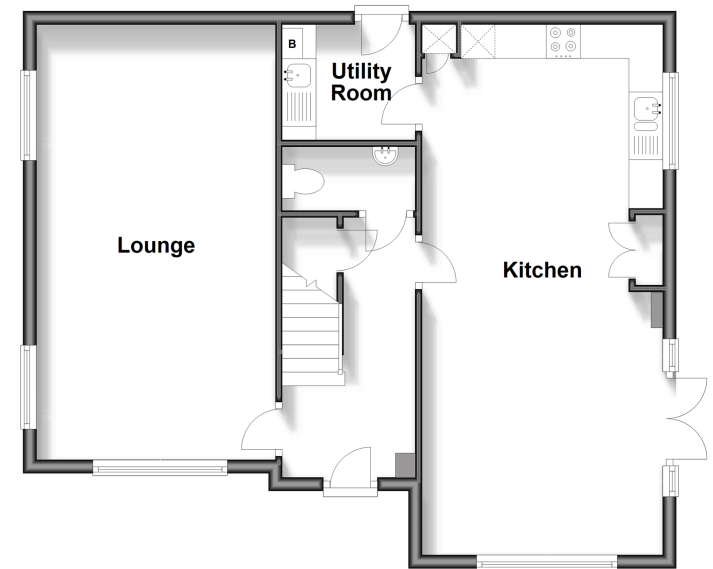
### OUTSIDE

Driveway

Front Garden

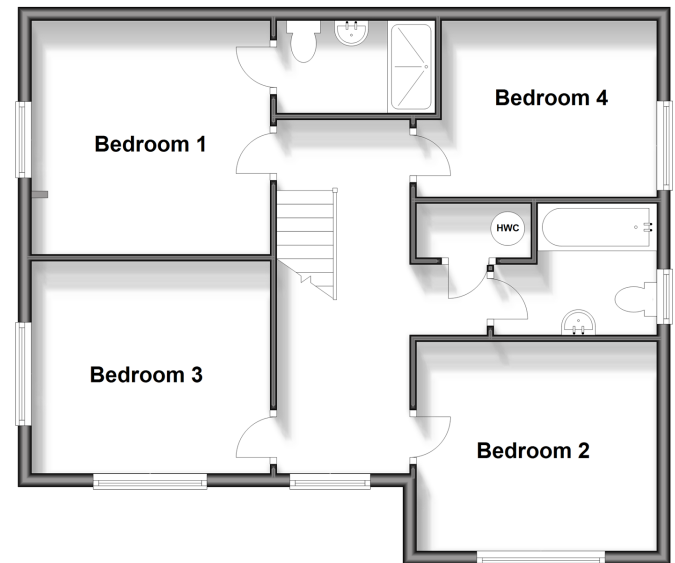
### Ground Floor

Approx. 65.0 sq. metres (700.0 sq. feet)



### First Floor

Approx. 66.0 sq. metres (710.2 sq. feet)



**Call Herne Bay - 01227 361226 ■ [wardsofkent.co.uk](http://wardsofkent.co.uk)**

- Legal advice should be taken to verify fixtures/fittings, planning, alterations and/or lease details
- Appliances & services are untested, dimensions are approximate and floor plans are not to scale
- Through a Homewise Home For Life Plan people aged 60+ can secure this property for up to 59% less, by purchasing a Lifetime Lease.



11238369/20240325/GS/GG