



**Price**  
**£150,000**

**Leasehold**

1x  1x  1x 

**Frances Court, High  
Street, Herne Bay, Kent,  
CT6**

**OVER 60?**

Secure this property  
for up to **59% less!**

**Wards**  
Helping you move forwards





## Main features

- Central Herne Bay location with sea views from the kitchen
- Sold with no onward chain
- Open plan kitchen/diner on second floor
- Ideal for first time buyers or investors
- The top floor benefits from shared light and ventilation only

## Accommodation

### SECOND FLOOR

Bedroom: 15'2 x 8'9 (4.63m x 2.67m)

Lounge: 16'3 x 15'4 (4.96m x 4.68m)

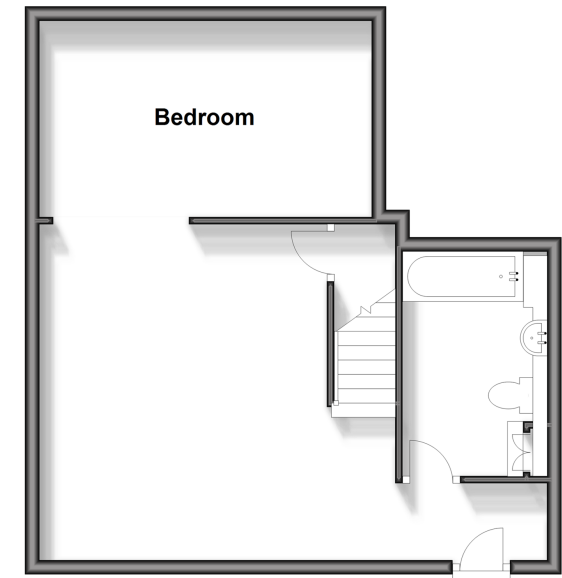
Bathroom: 10'1 x 6'3 (3.08m x 1.91m)

### TOP FLOOR

Lounge/Kitchen/Diner: 24'7 x 23'4 (7.50m x 7.12m)

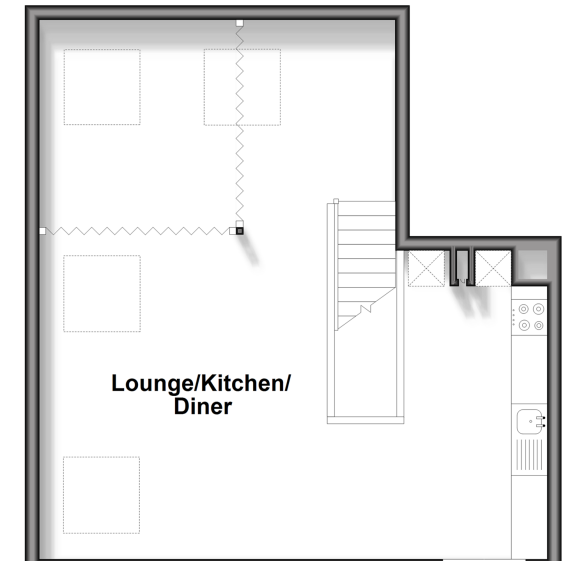
## Second Floor

Approx. 45.5 sq. metres (489.9 sq. feet)



## Top Floor

Approx. 37.9 sq. metres (408.3 sq. feet)



**Call Herne Bay - 01227 361226 ■ [wardsofkent.co.uk](http://wardsofkent.co.uk)**

- Legal advice should be taken to verify fixtures/fittings, planning, alterations and/or lease details
- Appliances & services are untested, dimensions are approximate and floor plans are not to scale
- Through a Homewise Home For Life Plan people aged 60+ can secure this property for up to 59% less, by purchasing a Lifetime Lease.



11238373/20240418/GS/AT