



Price
£525,000

Freehold

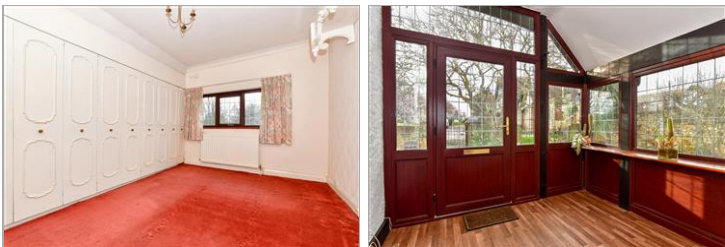
3x  2x  2x 

**Oxenden Square, Herne
Bay, Kent, CT6**

OVER 60?

Secure this property
for up to **59% less!**

Wards
Helping you move forwards



Main features

- Herne Bays famous Oxenden Square
- Private development, no through traffic
- Vacant possession, refurbishment opportunity
- A short walk from the sea front and the town centre
- Large lounge, dining room and breakfast room and detached garage

Accommodation

SPLIT LEVEL GROUND FLOOR

Porch
Entrance Hallway
Lounge: 18'0 x 14'0 (5.49m x 4.27m)
Dining Area: 12'6 x 12'6 (3.81m x 3.81m)
Breakfast Room: 12'4 x 8'7 (3.76m x 2.62m)
Cloakroom
Kitchen

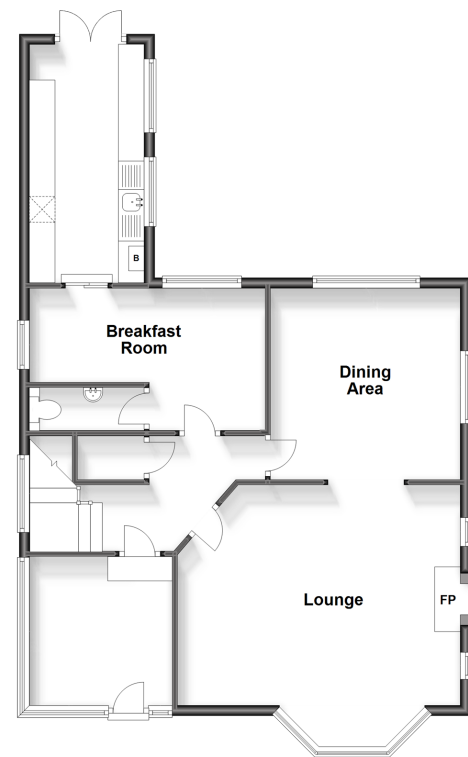
FIRST FLOOR

Landing
Bathroom
Shower Room
Bedroom 2: 14'2 x 10'0 (4.32m x 3.05m)
Bedroom 1: 12'2 x 12'1 (3.71m x 3.69m)
Bedroom 3: 10'6 x 9'5 (3.20m x 2.87m)
OUTBUILDING
Garage

OUTSIDE

Driveway
Front Garden
Rear Garden

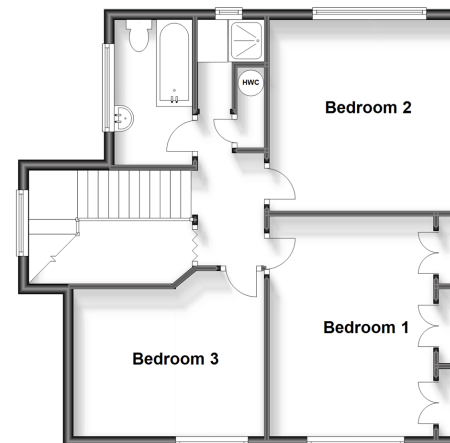
Split Level Ground Floor
Approx. 78.8 sq. metres (847.7 sq. feet)



Outbuilding
Approx. 15.0 sq. metres (161.2 sq. feet)



First Floor
Approx. 52.7 sq. metres (567.1 sq. feet)



Call Herne Bay - 01227 361226 ■ wardsofkent.co.uk

- Legal advice should be taken to verify fixtures/fittings, planning, alterations and/or lease details
- Appliances & services are untested, dimensions are approximate and floor plans are not to scale
- Through a Homewise Home For Life Plan people aged 60+ can secure this property for up to 59% less, by purchasing a Lifetime Lease.

