



**Price**  
**£315,000**

**Freehold**

3x  1x  1x 

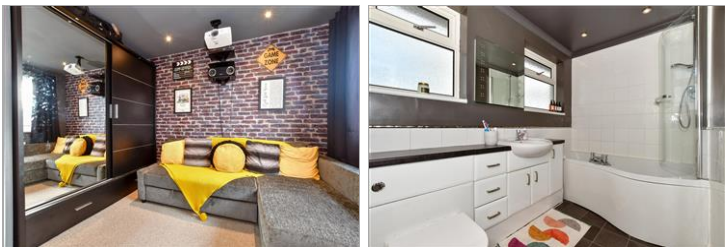
**Wrentham Avenue,  
Greenhill, Herne Bay,  
Kent, CT6**

**OVER 60?**

Secure this property  
for up to **59% less!**

*Wards*  
Helping you move forwards





## Main features

- Immaculate condition throughout with versatile layout
- Great size garden
- Popular Greenhill location
- Off road parking
- Open-plan lounge, dining area and kitchen perfect for entertaining

## Accommodation

### GROUND FLOOR

Entrance Hallway

Family Room: 14'11 x 7'2 (4.55m x 2.19m)

Lounge: 18'5 x 11'1 (5.62m x 3.38m)

Kitchen: 11'8 x 7'1 (3.56m x 2.16m)

### FIRST FLOOR

Landing

Bathroom: 9'6 x 5'5 (2.90m x 1.65m)

Bedroom 3: 8'6 x 8'5 (2.59m x 2.57m)

Bedroom 1: 9'6 x 8'9 (2.90m x 2.67m)

Bedroom 2: 11'9 x 8'7 (3.58m x 2.62m)

### OUTSIDE

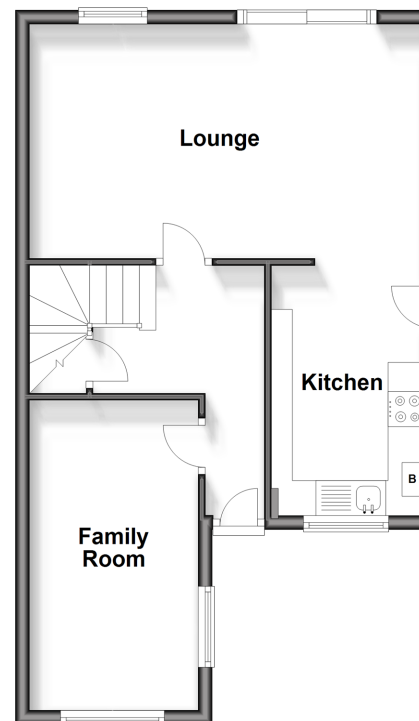
Driveway

Front Garden

Rear Garden

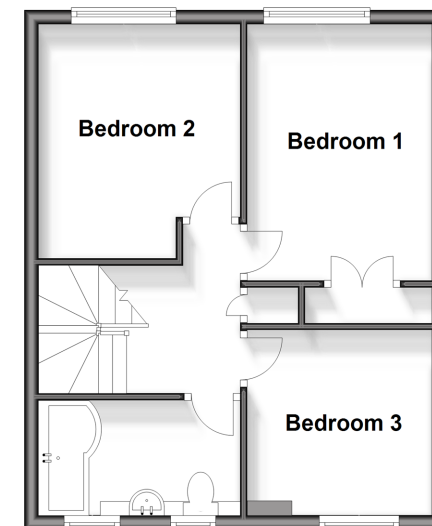
### Ground Floor

Approx. 46.2 sq. metres (497.4 sq. feet)



### First Floor

Approx. 39.5 sq. metres (425.1 sq. feet)



**Call Herne Bay - 01227 361226 ■ [wardsofkent.co.uk](http://wardsofkent.co.uk)**

- Legal advice should be taken to verify fixtures/fittings, planning, alterations and/or lease details
- Appliances & services are untested, dimensions are approximate and floor plans are not to scale
- Through a Homewise Home For Life Plan people aged 60+ can secure this property for up to 59% less, by purchasing a Lifetime Lease.

