



Guide Price
£360,000

Freehold

3x  1x  1x 

**Cornwall Road,
Greenhill, Herne Bay,
Kent, CT6**

OVER 60?

Secure this property
for up to **59% less!**

Wards
Helping you move forwards



Main features

- Large rear garden
- Garage and driveway for multiple cars
- Set in popular Greenhill Location
- Great condition throughout
- On a bus route, local shops within walking distance

Accommodation

GROUND FLOOR

Entrance Porch
Entrance Hallway
Cloakroom
Lounge: 15'5 x 11'1 (4.70m x 3.38m)
Dining Area: 7'8 x 7'2 (2.34m x 2.19m)
Kitchen: 10'0 x 7'7 (3.05m x 2.31m)
Family Room: 17'3 x 12'0 (5.26m x 3.66m)

FIRST FLOOR

Landing
Shower Room: 7'8 x 5'7 (2.34m x 1.70m)
Bedroom 1: 17'10 x 11'7 (5.44m x 3.53m)
Bedroom 2: 10'3 x 9'6 (3.13m x 2.90m)
Bedroom 3: 9'2 x 7'5 (2.80m x 2.26m)

OUTBUILDING

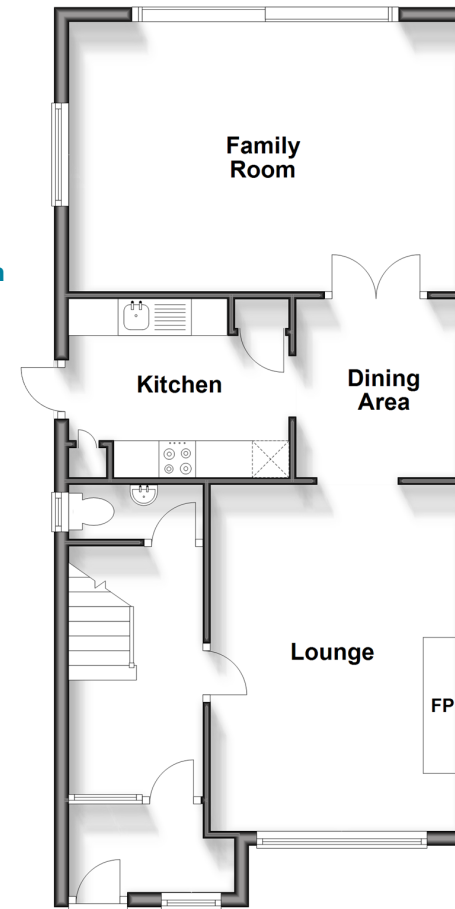
Garage

OUTSIDE

Driveway
Front Garden
Rear Garden

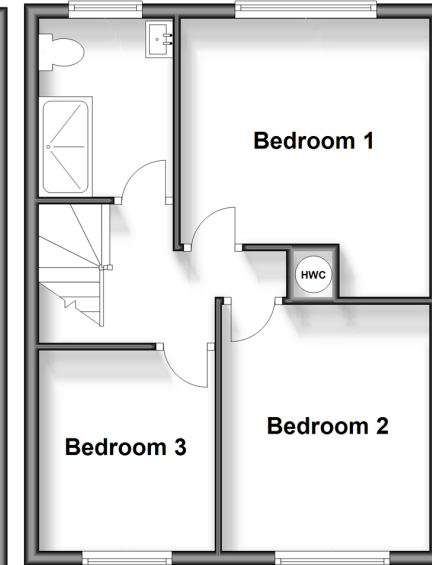
Ground Floor

Approx. 60.7 sq. metres (653.8 sq. feet)



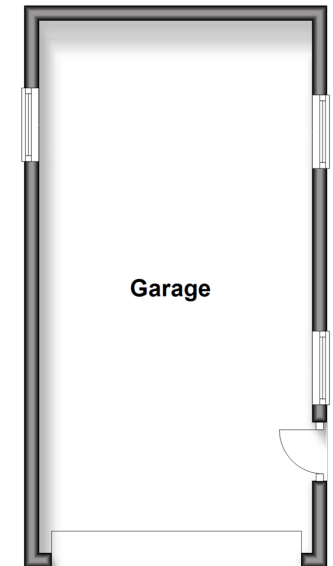
First Floor

Approx. 38.7 sq. metres (416.6 sq. feet)



Outbuilding

Approx. 27.0 sq. metres (290.8 sq. feet)



Call Herne Bay - 01227 361226 ■ wardsofkent.co.uk

- Legal advice should be taken to verify fixtures/fittings, planning, alterations and/or lease details
- Appliances & services are untested, dimensions are approximate and floor plans are not to scale
- Through a Homewise Home For Life Plan people aged 60+ can secure this property for up to 59% less, by purchasing a Lifetime Lease.



11238403/20240422/AT/AT