



Price
£250,000

Leasehold

2x  1x  1x 

**St. George's Terrace,
Herne Bay, Kent, CT6**

OVER 60?

Secure this property
for up to **59% less!**

Wards
Helping you move forwards



Main features

- No chain, Vacant possession. Great location for a holiday let
- Sea views show casing the stunning coastline
- Set in a sought after location close to the seafront
- Recently refurbished
- Immaculate condition throughout

Accommodation

GROUND FLOOR

Entrance Hallway

Bedroom 1: 11'3 x 6'7 (3.43m x 2.01m)

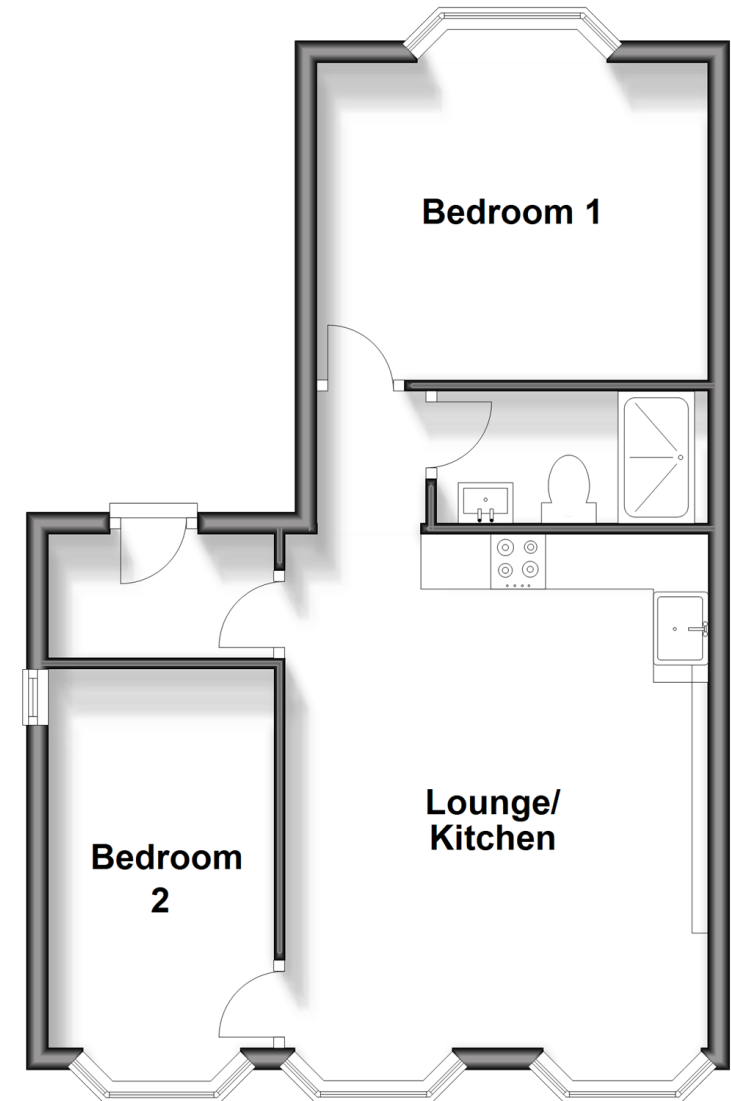
Kitchen/Diner: 15'3 x 12'6 (4.65m x 3.81m)

Shower Room: 7'5 x 3'9 (2.26m x 1.14m)

Bedroom 2: 11'7 x 11'7 (3.53m x 3.53m)

Ground Floor

Approx. 44.2 sq. metres (475.5 sq. feet)



Call Herne Bay - 01227 361226 ■ wardsofkent.co.uk

- Legal advice should be taken to verify fixtures/fittings, planning, alterations and/or lease details
- Appliances & services are untested, dimensions are approximate and floor plans are not to scale
- Through a Homewise Home For Life Plan people aged 60+ can secure this property for up to 59% less, by purchasing a Lifetime Lease.



11238421/20240419/AT/AT