



Price

£172,000

Leasehold

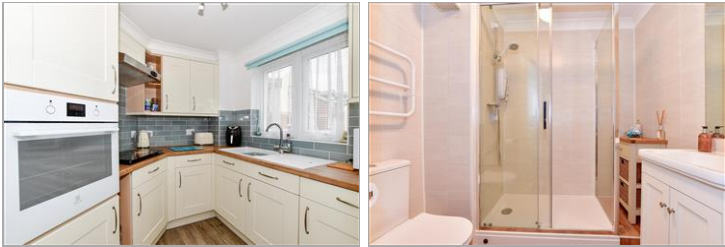
1x  1x  1x 

**Richmond Court,
Richmond Street,
Herne Bay, Kent, CT6**

OVER 60?

Secure this property
for up to **59% less!**

Wards
Helping you move forwards



Main features

- Set in popular Richmond Court development
- Completely renovated throughout
- Balcony overlooking communal gardens
- Close to local amenities
- Retirement community with secure phone entry system

Accommodation

FIRST FLOOR

Entrance Hallway

Shower Room

Bedroom: 13'6 x 9'3 (4.12m x 2.82m)

Lounge/Diner: 18'7 x 10'7 (5.67m x 3.23m)

Kitchen: 7'8 x 7'5 (2.34m x 2.26m)

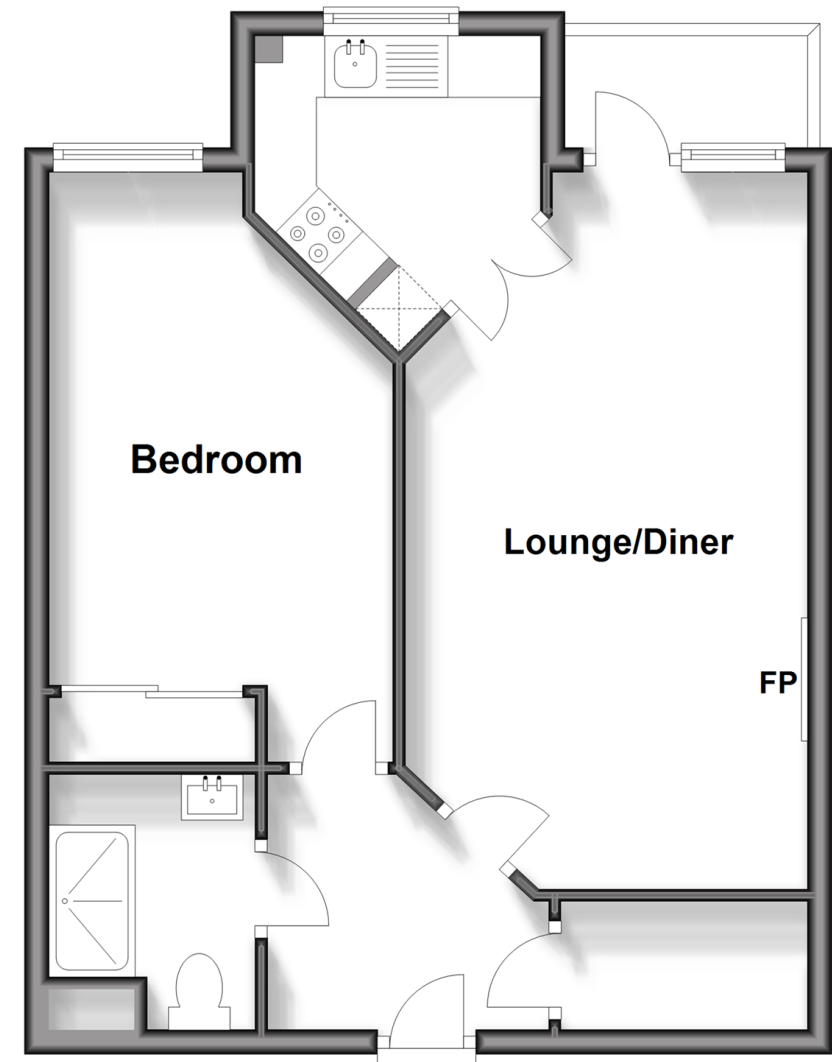
OUTSIDE

Balcony

Communal Gardens

First Floor

Approx. 45.5 sq. metres (489.4 sq. feet)



Call Herne Bay - 01227 361226 ■ wardsofkent.co.uk

- Legal advice should be taken to verify fixtures/fittings, planning, alterations and/or lease details
- Appliances & services are untested, dimensions are approximate and floor plans are not to scale
- Through a Homewise Home For Life Plan people aged 60+ can secure this property for up to 59% less, by purchasing a Lifetime Lease.



11238453/20240415/AT/AT