



OVER 60?

Secure this property
for up to **59% less!**

Price

£315,000

Freehold

3x  2x  1x 

**Neville Road, Herne Bay,
Kent, CT6**

Wards
Helping you move forwards



Main features

- A well maintained rear garden
- 2 allocated parking bays to the front
- Stunning fully fitted kitchen
- Downstairs cloakroom and en-suite shower room to bedroom 1
- Situated on the outskirts of Beltinge village, on a regular bus service

Accommodation

GROUND FLOOR

Kitchen: 15'3 x 14'8 (4.65m x 4.47m)
Cloakroom
Lounge: 15'8 x 15'0 (4.78m x 4.58m)

FIRST FLOOR

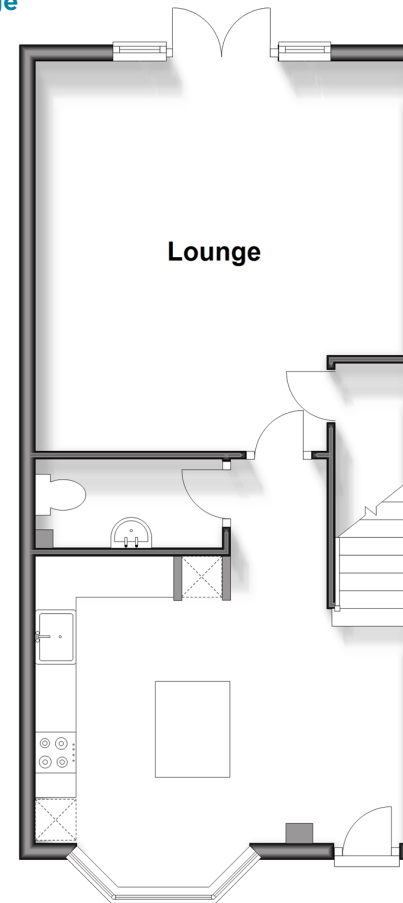
Landing
Bedroom 3: 8'8 x 6'5 (2.64m x 1.96m)
Bedroom 2: 12'5 x 8'2 (3.79m x 2.49m)
Bathroom
Bedroom 1: 12'9 x 11'6 (3.89m x 3.51m)
En-Suite Shower Room

OUTSIDE

Allocated Parking
Front Garden
Rear Garden

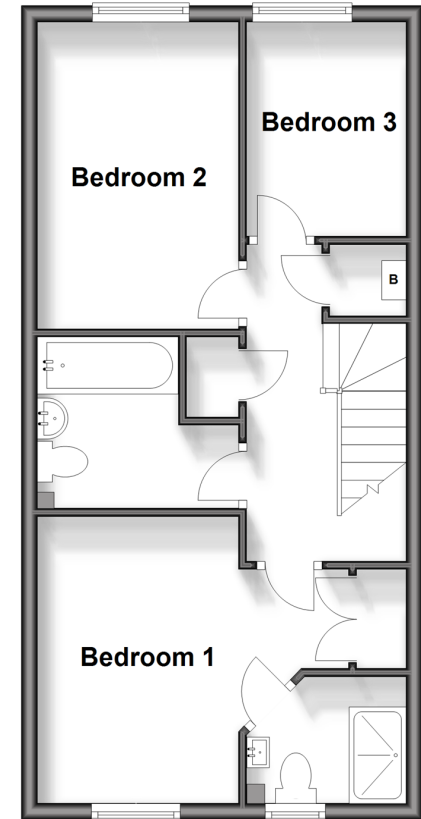
Ground Floor

Approx. 43.6 sq. metres (469.6 sq. feet)



First Floor

Approx. 43.3 sq. metres (466.3 sq. feet)



Call Herne Bay - 01227 361226 ■ wardsofkent.co.uk

- Legal advice should be taken to verify fixtures/fittings, planning, alterations and/or lease details
- Appliances & services are untested, dimensions are approximate and floor plans are not to scale
- Through a Homewise Home For Life Plan people aged 60+ can secure this property for up to 59% less, by purchasing a Lifetime Lease.



11238457/20240424/GS/GG