



OVER 60?

Secure this property
for up to **59% less!**

Price

£290,000

Freehold

2x  1x  1x 

**Almond Grove,
Hempstead, Gillingham,
Kent, ME7**

Wards
Helping you move forwards



Main features

- Well presented first time buyers home
- Useful garage en-bloc and allocated parking
- Spacious accommodation and modern kitchen
- Low maintenance rear garden
- Situated in the popular Hempstead location close to the local amenities

Accommodation

GROUND FLOOR

Porch

Lounge/Diner : 16'2 x 11'11 (4.93m x 3.63m)

Kitchen : 11'10 x 8'9 (3.61m x 2.67m)

Conservatory : 8'10 x 6'9 (2.69m x 2.06m)

FIRST FLOOR

Landing

Bedroom 1 : 11'10 x 10'8 (3.61m x 3.25m)

Bedroom 2 : 11'10 x 8'2 (3.61m x 2.49m)

Bathroom

OUTSIDE

Front Garden

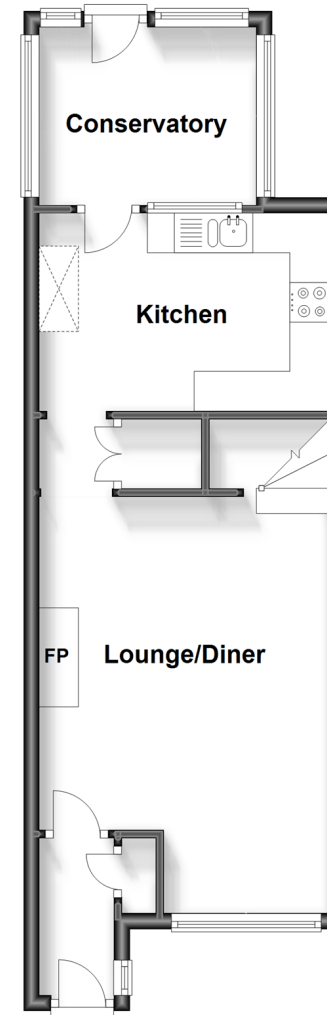
Rear Garden

Allocated Parking

Garage En-Bloc

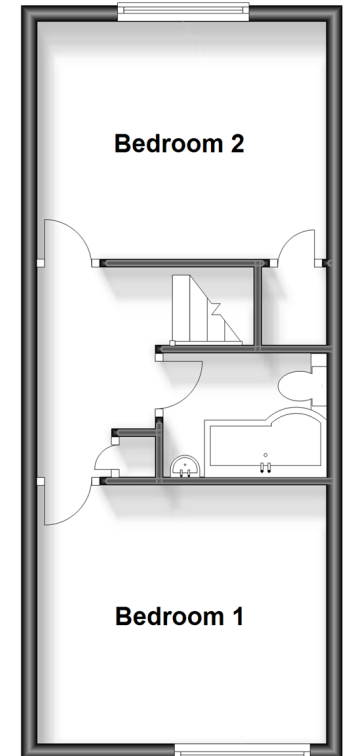
Ground Floor

Approx. 40.1 sq. metres (432.0 sq. feet)



First Floor

Approx. 33.7 sq. metres (362.5 sq. feet)



Call Rainham - 01634 373531 ■ wardsofkent.co.uk

- Legal advice should be taken to verify fixtures/fittings, planning, alterations and/or lease details
- Appliances & services are untested, dimensions are approximate and floor plans are not to scale
- Through a Homewise Home For Life Plan people aged 60+ can secure this property for up to 59% less, by purchasing a Lifetime Lease.



11326195/20231026/CW/NJ