



**OVER 60?**

Secure this property  
for up to **59% less!**

**Price**  
**£220,000**

**Leasehold**

2x  1x  1x 

**Maplins Close, Rainham,  
Gillingham, Kent, ME8**

*Wards*  
Helping you move forwards





## Main features

- **Perfect starter home for first time buyers**
- **Close to the town centre and Rainham train station**
- **Useful garage en-bloc**
- **Private and low maintenance garden to the rear**
- **Being sold with the benefit of no chain**

## Accommodation

### FIRST FLOOR

Landing  
Kitchen: 10'11 x 7'2 (3.33m x 2.19m)  
Lounge: 14'4 x 10'9 (4.37m x 3.28m)

### SECOND FLOOR

Landing  
Bedroom 1 : 11'1 x 10'7 (3.38m x 3.23m)  
Bedroom 2 : 10'7 x 9'2 (3.23m x 2.80m)  
Bathroom: 7'4 x 4'10 (2.24m x 1.47m)

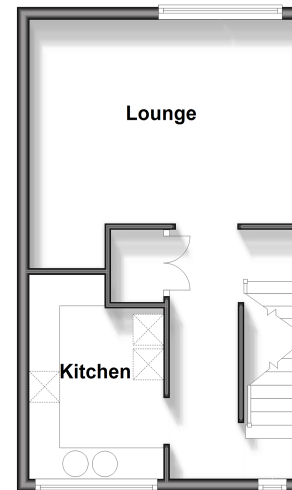
### OUTBUILDING

Garage En-Bloc

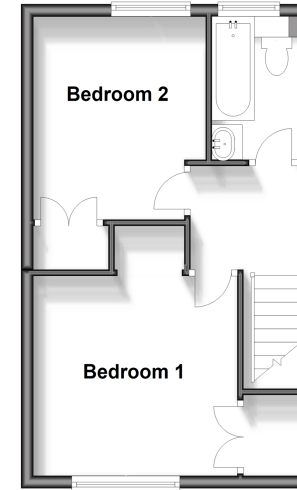
### OUTSIDE

Front Garden  
Rear Garden

**First Floor**  
Approx. 32.7 sq. metres (352.3 sq. feet)



**Second Floor**  
Approx. 32.7 sq. metres (352.3 sq. feet)



**Outbuilding**  
Approx. 8.6 sq. metres (92.6 sq. feet)



**Call Rainham - 01634 373531 ■ [wardsofkent.co.uk](http://wardsofkent.co.uk)**

■ Legal advice should be taken to verify fixtures/fittings, planning, alterations and/or lease details  
■ Through a Homewise Home For Life Plan people aged 60+ can secure this property for up to 59% less, by purchasing a Lifetime Lease.

■ Appliances & services are untested, dimensions are approximate and floor plans are not to scale