



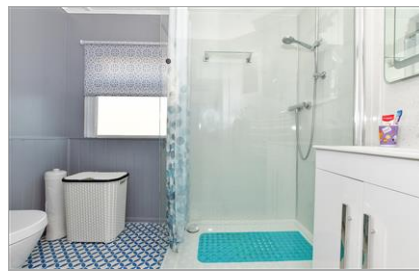
Price
£215,000

Freehold

2x  1x  1x 

**Beckenham Park,
Otterham Quay Lane,
Kent, ME8**

Wards
Helping you move forwards



Main features

- A smartly presented park home that would be perfect for downsizing
- Open plan lounge/diner and modern kitchen
- Re-fitted shower room
- Communal parking
- Sought after development
- No forward chain
- Over 40's only!!

Accommodation

GROUND FLOOR

Kitchen: 9'2 x 8'6 (2.80m x 2.59m)

Lounge/Diner: (L-shaped) 14'9 x 9'9 (4.50m x 2.97m) plus 9'3 x 9'2 (2.82m x 2.80m)

Inner Hall

Shower Room

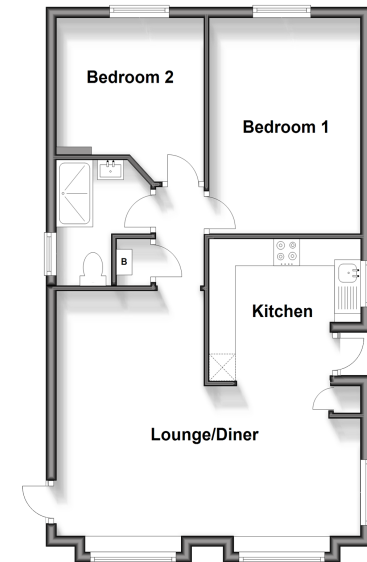
Bedroom 1: 13'4 x 9'3 (4.07m x 2.82m)

Bedroom 2: 10'8 x 9'3 (3.25m x 2.82m)

OUTSIDE

Communal Parking

Ground Floor
Approx. 56.6 sq. metres (609.7 sq. feet)



Call Rainham - 01634 373531 ■ wardsofkent.co.uk

■ If buying to let, the energy rating will need to be improved to at least 'E' rating before you can let the property

■ Appliances & services are untested, dimensions are approximate and floor plans are not to scale

■ Legal advice should be taken to verify fixtures/fittings, planning, alterations and/or lease details



11333112/20240208/CW/DW