



**Price**  
**£440,000**

**Freehold**

4x  2x  2x 

**Northumberland  
Avenue, Rainham,  
Gillingham, Kent, ME8**

**OVER 60?**

Secure this property  
for up to **59% less!**

*Wards*  
Helping you move forwards





## Main features

- Beautifully presented family home
- Open plan lounge and dining area
- Ample parking and generous sized rear garden
- Large loft conversion as bedroom 1
- Situated in a central location close to the High Street, train station and schools.

## Accommodation

### GROUND FLOOR

Entrance Hall

Lounge: 12'1 x 10'9 (3.69m x 3.28m)

Kitchen: 11'8 x 8'4 (3.56m x 2.54m)

Utility Area : 8'1 x 4'6 (2.47m x 1.37m)

Dining Area : 9'11 x 7'10 (3.02m x 2.39m)

### FIRST FLOOR

Landing

Bedroom 2: 11'2 x 10'7 (3.41m x 3.23m)

Bedroom 3 : 6'7 x 6'6 (2.01m x 1.98m)

Bedroom 4 : 10'9 x 10'7 (3.28m x 3.23m)

Bathroom

### SECOND FLOOR

Landing

Bedroom 1 : 17'3 x 12'3 (5.26m x 3.74m)

En-Suite Shower Room

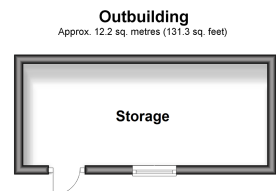
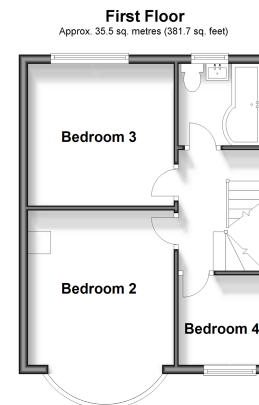
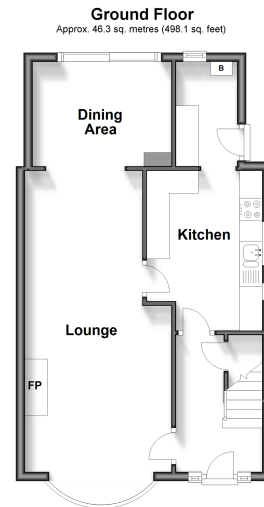
### OUTBUILDING

Storage

### OUTSIDE

Rear Garden

Driveway



**Call Rainham - 01634 373531 ■ [wardsofkent.co.uk](http://wardsofkent.co.uk)**

■ Legal advice should be taken to verify fixtures/fittings, planning, alterations and/or lease details  
■ Through a Homewise Home For Life Plan people aged 60+ can secure this property for up to 59% less, by purchasing a Lifetime Lease.

■ Appliances & services are untested, dimensions are approximate and floor plans are not to scale



11336368/20240423/MK/NJ