



Price
£525,000

Freehold

4x  2x  1x 

**Bramling Way, Rainham,
Gillingham, Kent, ME8**

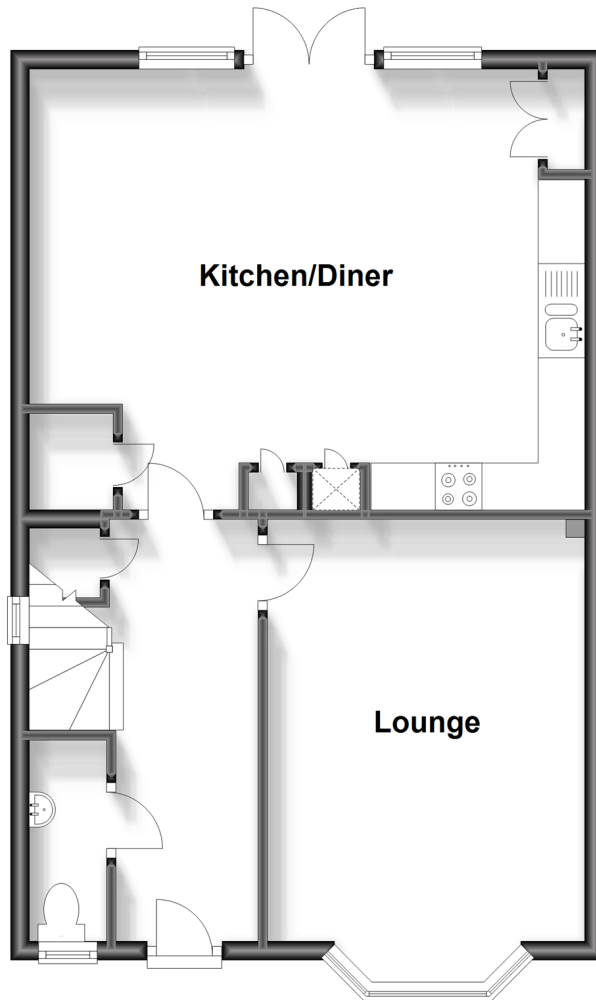
OVER 60?

Secure this property
for up to **59% less!**

Wards
Helping you move forwards

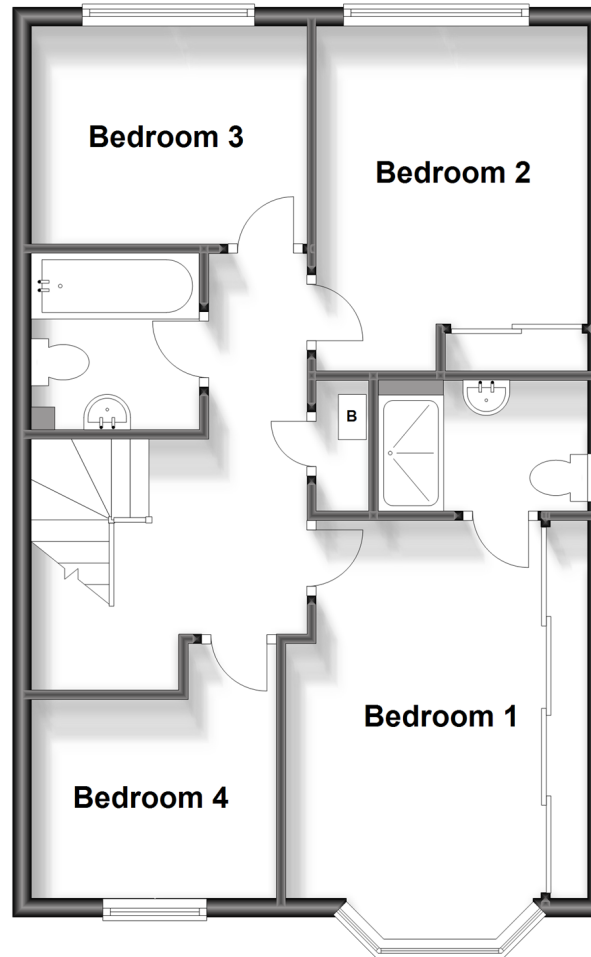
Ground Floor

Approx. 55.6 sq. metres (597.9 sq. feet)



First Floor

Approx. 55.6 sq. metres (597.9 sq. feet)



Accommodation

GROUND FLOOR

Entrance Hall

Downstairs Cloakroom

Lounge : 16'3 x 11'4 (4.96m x 3.46m)

Kitchen/Diner : 19'6 x 14'9 (5.95m x 4.50m)

FIRST FLOOR

Landing

Bedroom 1 : 14'4 x 8'8 (4.37m x 2.64m)

En-Suite Shower Room : 7'4 x 4'6 (2.24m x 1.37m)

Bedroom 2 : 12'2 x 9'9 (3.71m x 2.97m)

Bedroom 3 : 9'5 x 7'8 (2.87m x 2.34m)

Bedroom 4 : 8'5 x 7'3 (2.57m x 2.21m)

Bathroom : 6'8 x 5'8 (2.03m x 1.73m)

OUTSIDE

Front Garden

Rear Garden

Garage: 18'7 x 9'5 (5.67m x 2.87m)

Driveway



Main features

- An attractive and newly built family home that is of a show home standard throughout
- Stunning 19ft kitchen/diner and spacious 16ft lounge
- Useful downstairs cloakroom
- Low maintenance rear garden
- Sought after development
- Close to local amenities



Nearest Schools

Primary Schools: Miers Court Primary, St Margaret's CofE Voluntary Controlled Junior School, Riverside Primary
Secondary Schools: Leigh Academy Rainham, Rainham School for Girls, The Howard School, Rainham Mark Grammar School



Transport Information

Train Stations: Rainham 0.4 miles, Newington 2.3 miles, Gillingham 3.2 miles



Address

Bramling Way, Rainham, Gillingham, Kent, ME8



Directions

For directions to this property please contact us.



Wards
Helping you move forwards

Call Rainham Branch 01634 373531 ■ wardsofkent.co.uk



■ Legal advice should be taken to verify fixtures/fittings, planning, alterations and/or lease details ■ Appliances & services are untested, dimensions are approximate and floor plans are not to scale
■ Through a Homewise Home For Life Plan people aged 60+ can secure this property for up to 59% less, by purchasing a Lifetime Lease.



11337059/20230926/DW/DW