



Video Tour available

Price

£450,000

Freehold

2x  1x  1x 

Cozenton Close, Rainham, Gillingham,
Kent, ME8

Wards
Helping you move forwards



Main features

- A spacious property that would be perfect if you are looking to down size
- Generous 15ft lounge and 16ft kitchen/diner
- In need of updating throughout
- Low maintenance rear garden
- Highly sought after location
- No forward chain

Accommodation

GROUND FLOOR

Entrance Hall

Bedroom 1 : 11'9 x 10'6 (3.58m x 3.20m)

Bedroom 2 : 11'9 x 10'9 (3.58m x 3.28m)

Shower Room

Lounge : 15'9 x 15'2 (4.80m x 4.63m)

Kitchen/Diner: 16'9 x 7'5 (5.11m x 2.26m)

OUTSIDE

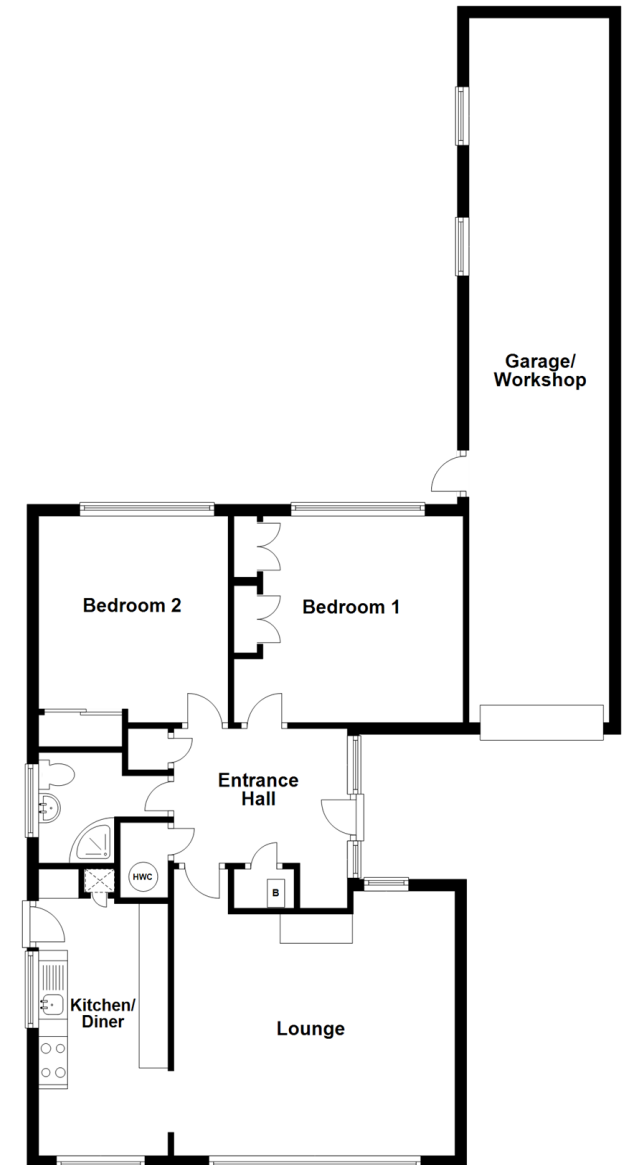
Front Garden

Rear Garden

Garage/Work Shop: 39'6 x 7'9 (12.05m x 2.36m)

Driveway

Ground Floor
Approx. 103.4 sq. metres (1113.5 sq. feet)



Call Rainham - 01634 373531 ■ wardsof Kent.co.uk

- Legal advice should be taken to verify fixtures/fittings, planning, alterations and/or lease details
- Appliances & services are untested, dimensions are approximate and floor plans are not to scale



11337102/20220801/SF/DW