



**Price**

**£500,000**

**Freehold**

4x  2x  3x 

**Pine Grove, Hempstead,  
Gillingham, Kent, ME7**

**OVER 60?**

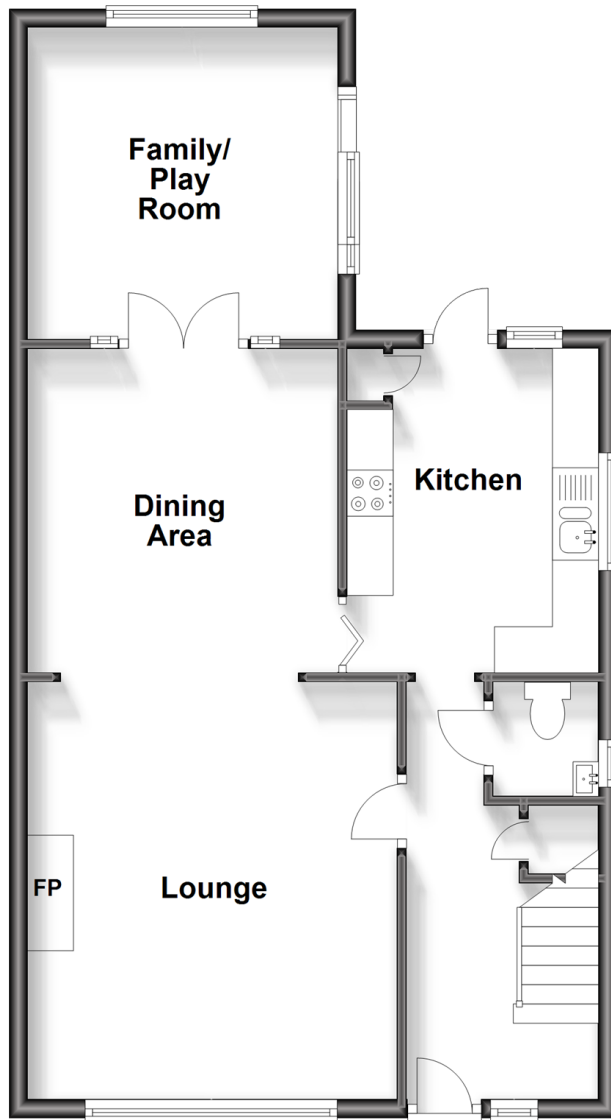
Secure this property  
for up to **59% less!**

*Wards*  
Helping you move forwards



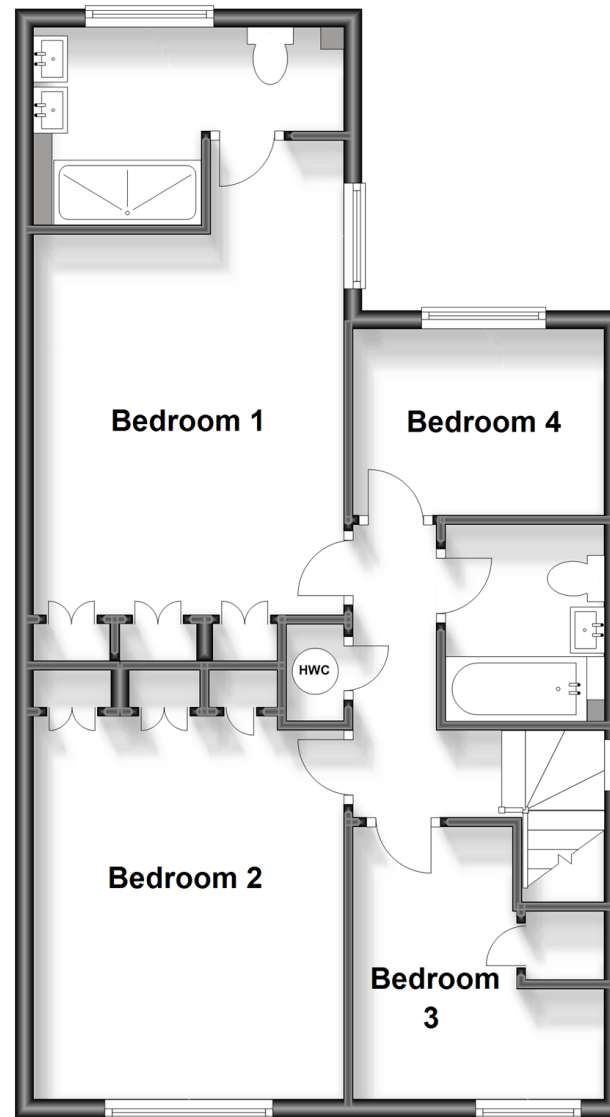
## Ground Floor

Approx. 62.2 sq. metres (669.7 sq. feet)



## First Floor

Approx. 62.8 sq. metres (676.2 sq. feet)



## Accommodation

### GROUND FLOOR

Entrance Hall

Downstairs Cloakroom

Lounge : 15'2 x 13'1 (4.63m x 3.99m)

Dining Area : 12'2 x 11'1 (3.71m x 3.38m)

Family/Play Room: 11'1 x 10'8 (3.38m x 3.25m)

Kitchen : 11'9 x 8'8 (3.58m x 2.64m)

### FIRST FLOOR

Landing

Bedroom 1 : 17'6 x 10'8 (5.34m x 3.25m)

En-Suite Shower Room : 10'6 x 4'5 (3.20m x 1.35m)

Bedroom 2 : 13'2 x 10'7 (4.02m x 3.23m)

Bedroom 3 : 10'8 x 9'3 at widest point (3.25m x 2.82m)

Bedroom 4 : 9'3 x 7'2 (2.82m x 2.19m)

Bathroom

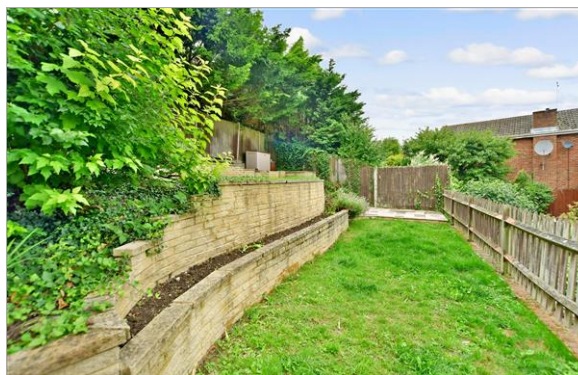
### OUTSIDE

Front Garden

Rear Garden

Garage : 17'9 x 8'9 (5.41m x 2.67m)

Driveway



## Main features

- A smartly presented and extended family home that offers excellent value for money
- Spacious 15ft lounge and stunning modern kitchen
- Family/play room for the children
- Impressive 17ft bedroom 1 with stylish en-suite shower room
- Low maintenance rear garden
- Sought after Hempstead location



### Nearest Schools

Primary Schools: Hempstead Junior School, St Thomas of Canterbury RC Primary, Twydall Junior School  
Secondary Schools: Leigh Academy Rainham, Greenacre School, Walderslade Girls' School



### Transport Information

Train Stations: Rainham 3.2 miles, Gillingham 3.5 miles, Chatham 3.8 miles



### Address

Pine Grove, Hempstead, Gillingham, Kent, ME7



### Directions

For directions to this property please contact us.





Call Rainham Branch 01634 373531 ■ [wardsofkent.co.uk](https://wardsofkent.co.uk)



- Legal advice should be taken to verify fixtures/fittings, planning, alterations and/or lease details
- Appliances & services are untested, dimensions are approximate and floor plans are not to scale
- Through a Homewise Home For Life Plan people aged 60+ can secure this property for up to 59% less, by purchasing a Lifetime Lease.



11337290/20230803/CW/DW