



**OVER 60?**

Secure this property  
for up to **59% less!**

**Price**  
**£365,000**

**Freehold**

4x  1x  2x 

**Bonnington Green,  
Twydall, Gillingham,  
Kent, ME8**

*Wards*  
Helping you move forwards





## Main features

- This impressive and deceptively spacious property would suit a young and growing family
- 15ft lounge and stunning open plan dining/family area
- Useful cloakroom/utility room
- Generous rear garden
- Close to shops and schools

## Accommodation

### GROUND FLOOR

Entrance Hall  
Cloakroom/Utility Room  
Lounge: 15'9 x 12'8 into recess (4.80m x 3.86m)  
Kitchen: 11'9 x 11'4 (3.58m x 3.46m)  
Dining/Family Area: 16'6 x 9'8 (5.03m x 2.95m)

### FIRST FLOOR

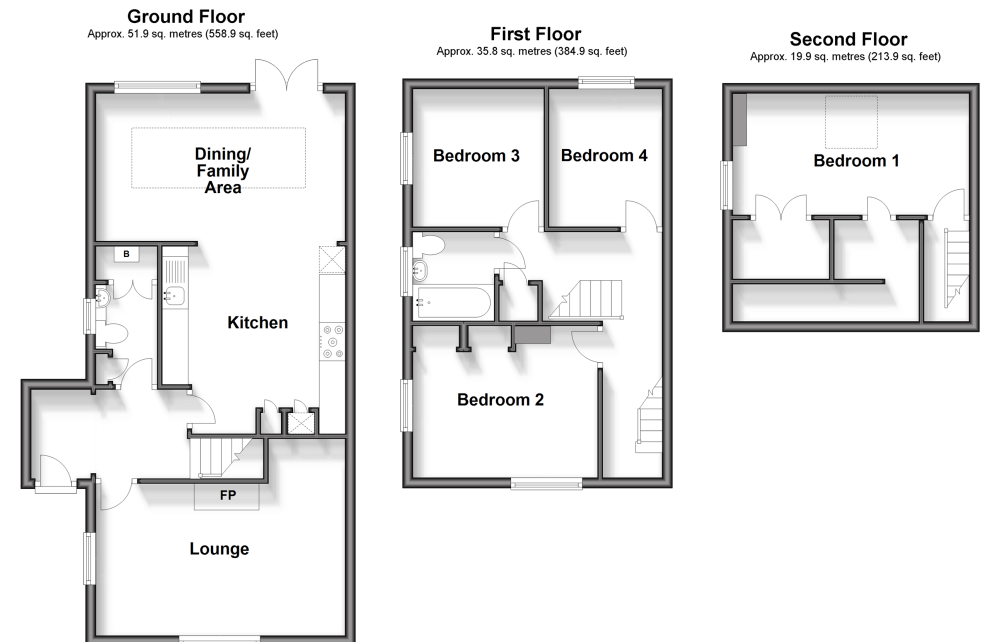
Landing  
Bedroom 2: 11'8 x 8'7 (3.56m x 2.62m)  
Bedroom 3: 8'9 x 8'3 (2.67m x 2.52m)  
Bedroom 4: 8'9 x 7'2 (2.67m x 2.19m)  
Bathroom

### SECOND FLOOR

Landing  
Bedroom 1: 15'9 x 7'6 (4.80m x 2.29m)

### OUTSIDE

Front Garden  
Rear Garden



**Call Rainham - 01634 373531 ■ [wardsofkent.co.uk](http://wardsofkent.co.uk)**

■ Legal advice should be taken to verify fixtures/fittings, planning, alterations and/or lease details  
■ Through a Homewise Home For Life Plan people aged 60+ can secure this property for up to 59% less, by purchasing a Lifetime Lease.

■ Appliances & services are untested, dimensions are approximate and floor plans are not to scale