



Price
£325,000

Freehold

3x  1x  2x 

**Moor Park Close,
Rainham, Gillingham,
Kent, ME8**

OVER 60?

Secure this property
for up to **59% less!**



Video Tour available

Wards
Helping you move forwards



Main features

- Cul-de-sac location
- Garage and driveway providing plenty of parking
- Walking distance to town centre, train station and schools
- Secluded rear garden with patio
- Large open-plan lounge/diner

Accommodation

GROUND FLOOR

Entrance Hall

Lounge/Diner: 23'6 (7.17m) x 13'1 at widest point (3.99m) narrowing to 8'0 (2.44m)

Kitchen: 9'2 x 8'1 (2.80m x 2.47m)

FIRST FLOOR

Landing

Bedroom 1 : 12'5 x 9'5 (3.79m x 2.87m)

Bedroom 2 : 11'5 x 7'8 (3.48m x 2.34m)

Bedroom 3 : 8'6 x 8'2 (2.59m x 2.49m)

Bathroom

OUTSIDE

Front Garden

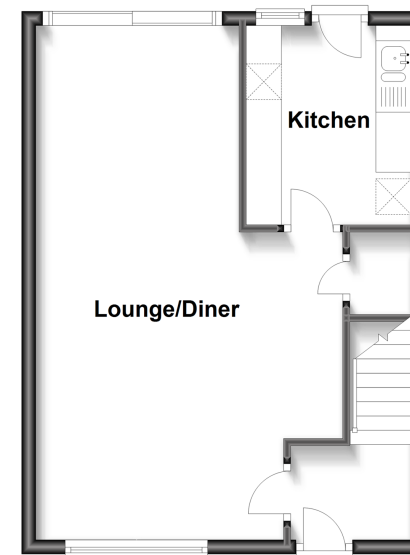
Rear Garden

Garage: 16'9 x 8'0 (5.11m x 2.44m)

Driveway

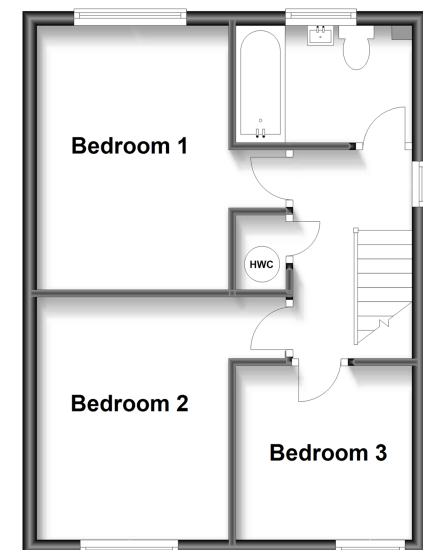
Ground Floor

Approx. 38.4 sq. metres (413.5 sq. feet)



First Floor

Approx. 38.4 sq. metres (413.5 sq. feet)



Call Rainham - 01634 373531 ■ wardsofkent.co.uk

- Legal advice should be taken to verify fixtures/fittings, planning, alterations and/or lease details
- Through a Homewise Home For Life Plan people aged 60+ can secure this property for up to 59% less, by purchasing a Lifetime Lease.

- Appliances & services are untested, dimensions are approximate and floor plans are not to scale



11337692/20230204/SF/DW