



Price

£200,000

Leasehold

1x  1x  1x 

**Coppice Court,
Kingsdown Close,
Hempstead, Kent, ME7**

Wards
Helping you move forwards



Main features

- A well presented retirement property that is perfect for downsizing
- 14ft lounge/diner and modern kitchen/breakfast room and shower room
- Communal gardens and warden assisted
- Communal parking
- Popular Hempstead location
- No forward chain

Accommodation

GROUND FLOOR

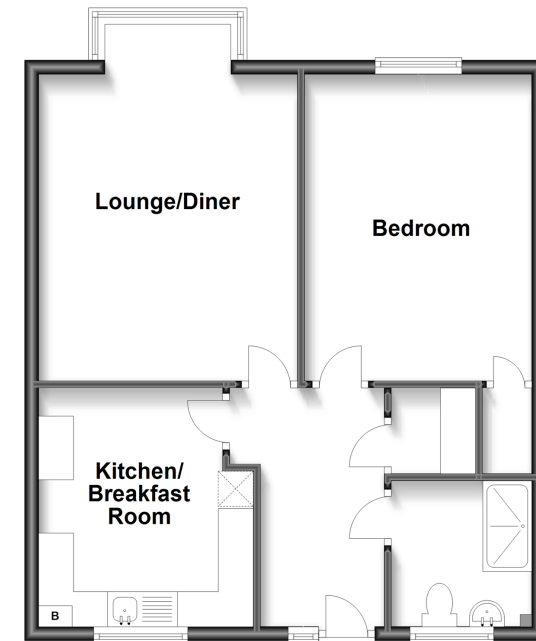
Entrance Hall
 Kitchen/Breakfast Room: 11'0 x 10'0 (3.36m x 3.05m)
 Shower Room : 6'7 x 6'6 (2.01m x 1.98m)
 Lounge/Diner: 14'6 x 12'0 (4.42m x 3.66m)
 Bedroom : 14'9 x 10'6 (4.50m x 3.20m)

OUTSIDE

Front Garden
 Communal Gardens
 Communal Parking

Ground Floor

Approx. 56.1 sq. metres (604.0 sq. feet)



Call Rainham - 01634 373531 ■ wardsofkent.co.uk

■ Legal advice should be taken to verify fixtures/fittings, planning, alterations and/or lease details

■ Appliances & services are untested, dimensions are approximate and floor plans are not to scale



11337773/20221019/CW/DW