



Price
£375,000

Freehold

3x  1x  2x 

**Hinton Crescent,
Hempstead, Gillingham,
Kent, ME7**

OVER 60?

Secure this property
for up to **59% less!**

Wards
Helping you move forwards



Main features

- A beautifully presented property that would be a great family home
- Spacious 14ft lounge and stunning modern kitchen
- Generous private rear garden
- Useful garage
- Sought after Hempstead location

Accommodation

GROUND FLOOR

Entrance Hall

Lounge : 14'3 x 11'2 (4.35m x 3.41m)

Dining Area: 9'9 x 8'7 (2.97m x 2.62m)

Kitchen: 11'8 x 8'1 (3.56m x 2.47m)

FIRST FLOOR

Landing

Bedroom 1 : 13'9 x 9'5 (4.19m x 2.87m)

Bedroom 2 : 10'8 x 10'6 (3.25m x 3.20m)

Bedroom 3 : 8'1 x 7'8 (2.47m x 2.34m)

Bathroom

OUTSIDE

Front Garden

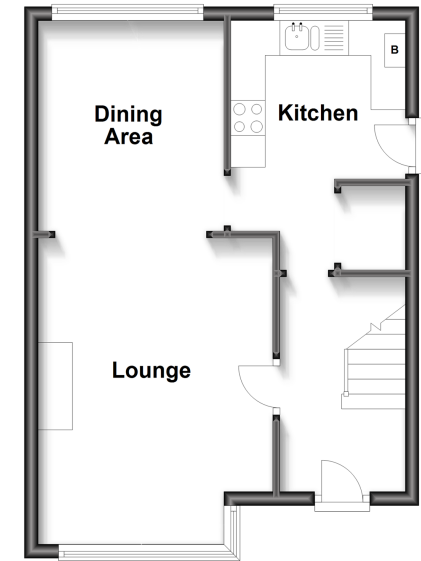
Rear Garden

Garage

Driveway

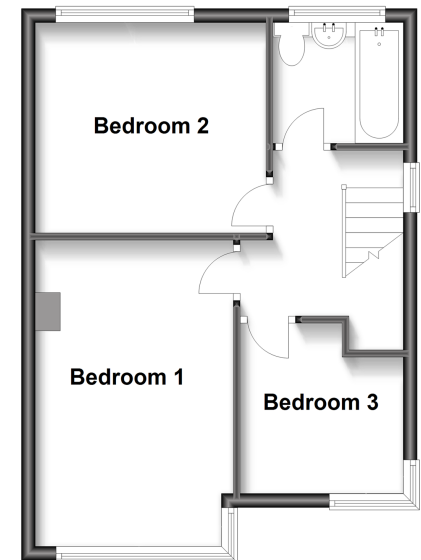
Ground Floor

Approx. 38.1 sq. metres (409.8 sq. feet)



First Floor

Approx. 38.1 sq. metres (409.8 sq. feet)



Call Rainham - 01634 373531 ■ wardsofkent.co.uk

- Legal advice should be taken to verify fixtures/fittings, planning, alterations and/or lease details
- Appliances & services are untested, dimensions are approximate and floor plans are not to scale
- Through a Homewise Home For Life Plan people aged 60+ can secure this property for up to 59% less, by purchasing a Lifetime Lease.



11337863/20240105/AJ/DW