

OVER 60?

Secure this property
for up to **59% less!**



Price
£410,000
Freehold

3x  2x  2x 

Curlew Avenue, Lower Halstow,
Sittingbourne, Kent, ME9

Wards
Helping you move forwards



Main features

- An attractive and immaculately presented family home
- Generous 14ft lounge and open plan dining area
- Useful downstairs cloakroom
- Panoramic conservatory
- Low maintenance rear garden
- Sought after village location

Accommodation

GROUND FLOOR

Entrance Hall
 Downstairs Cloakroom
 Lounge: 14'8 x 10'0 (4.47m x 3.05m)
 Dining Area : 16'6 x 9'7 (5.03m x 2.92m)
 Kitchen: 9'8 x 7'8 (2.95m x 2.34m)
 Conservatory : 8'2 x 8'2 (2.49m x 2.49m)

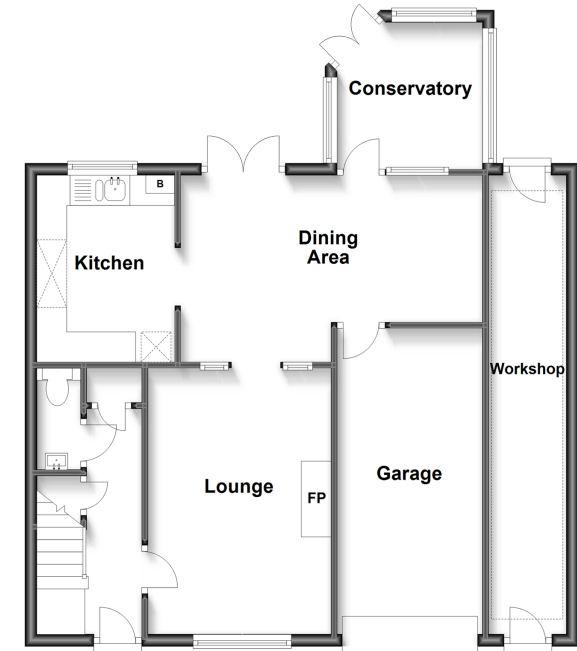
FIRST FLOOR

Landing
 Bedroom 1 : 10'6 x 10'0 (3.20m x 3.05m)
 En-Suite Shower Room
 Bedroom 2 : 12'5 x 7'6 (3.79m x 2.29m)
 Bedroom 3 : 9'5 x 6'5 (2.87m x 1.96m)
 Bathroom

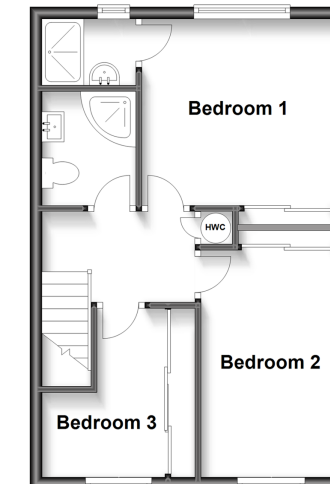
OUTSIDE

Front Garden
 Rear Garden
 Workshop: 21'8 x 5'8 (6.61m x 1.73m)
 Garage: 16'6 x 7'9 (5.03m x 2.36m)
 Driveway

Ground Floor
 Approx. 73.0 sq. metres (785.8 sq. feet)



First Floor
 Approx. 37.3 sq. metres (401.9 sq. feet)



Call Rainham - 01634 373531 ■ wardsofkent.co.uk

- Legal advice should be taken to verify fixtures/fittings, planning, alterations and/or lease details
- Appliances & services are untested, dimensions are approximate and floor plans are not to scale
- Through a Homewise Home For Life Plan people aged 60+ can secure this property for up to 59% less, by purchasing a Lifetime Lease.



11337866/20230420/DW/DW