

OVER 60?

Secure this property
for up to **59% less!**



Price
£525,000
Freehold

3x  2x  1x 

Brookes Place, Newington, Kent, ME9

Wards
Helping you move forwards



Main features

- An attractive and immaculately presented property that would be perfect for downsizing
- Impressive 21ft lounge and full en-suite bathroom
- Modern kitchen and bathroom
- Generous private rear garden
- Quiet cul-de-sac position
- Popular village location

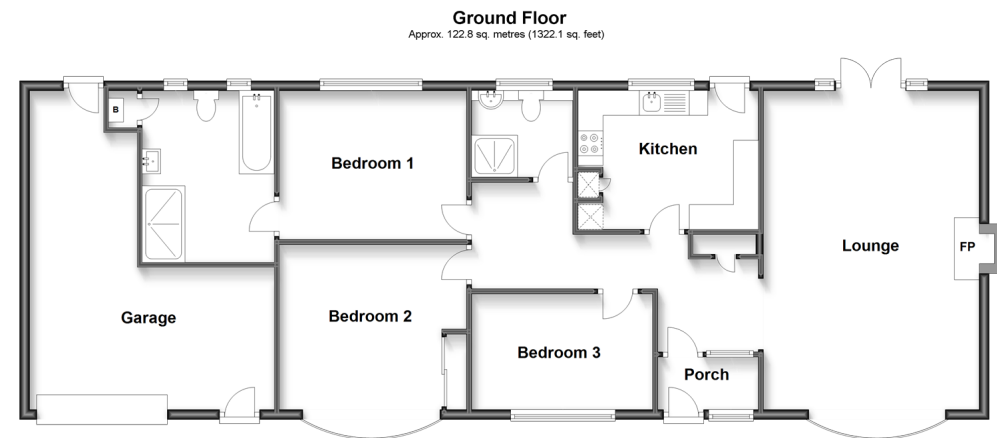
Accommodation

GROUND FLOOR

Porch
 Entrance Hall
 Bedroom 1 : 12'1 x 9'8 (3.69m x 2.95m)
 En-Suite Bathroom
 Bedroom 2 : 12'2 at widest point x 10'8 (3.71m x 3.25m)
 Bedroom 3 : 11'6 x 7'6 (3.51m x 2.29m)
 Shower Room
 Kitchen: 11'8 x 9'6 (3.56m x 2.90m)
 Lounge: 21'0 x 14'1 (6.41m x 4.30m)

OUTSIDE

Front Garden
 Rear Garden
 Garage: 21'4 x 16'0 (6.51m x 4.88m)
 Driveway



Call Rainham - 01634 373531 ■ wardsofkent.co.uk

■ Legal advice should be taken to verify fixtures/fittings, planning, alterations and/or lease details
 ■ Through a Homewise Home For Life Plan people aged 60+ can secure this property for up to 59% less, by purchasing a Lifetime Lease.

■ Appliances & services are untested, dimensions are approximate and floor plans are not to scale



11337876/20230223/CW/DW