



Price
£700,000
Freehold

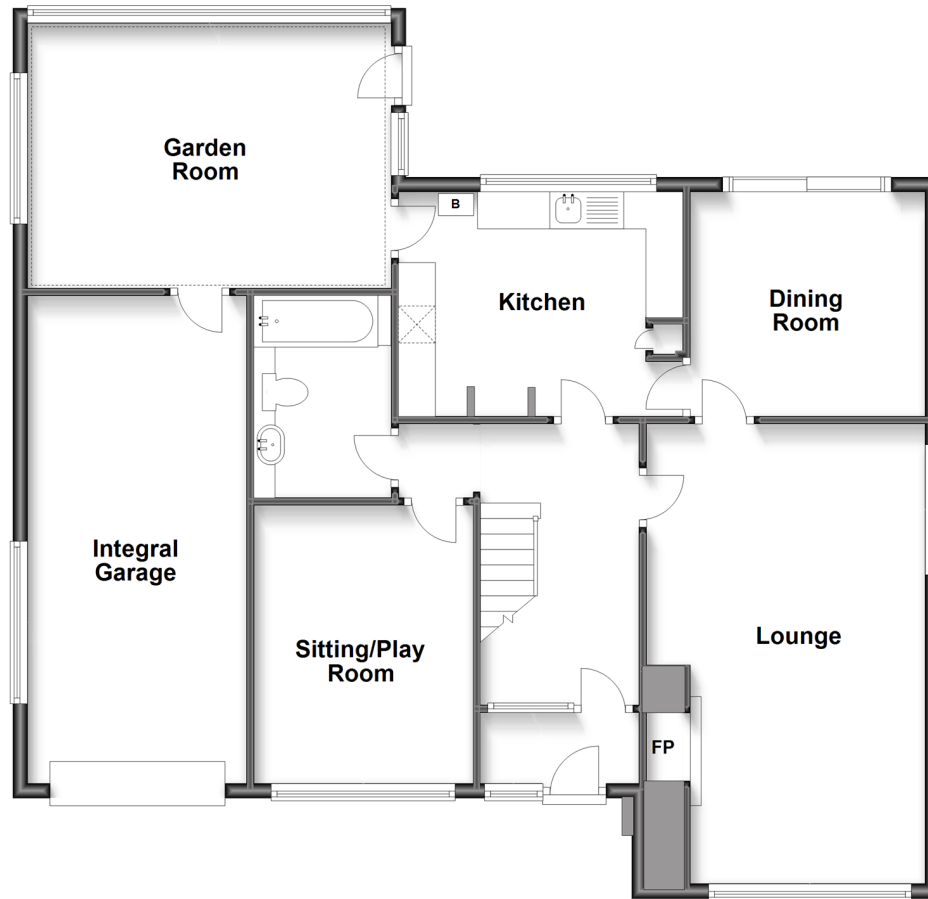
3x  2x  3x 

The Street, Hartlip, Sittingbourne, Kent,
ME9

Wards
Helping you move forwards

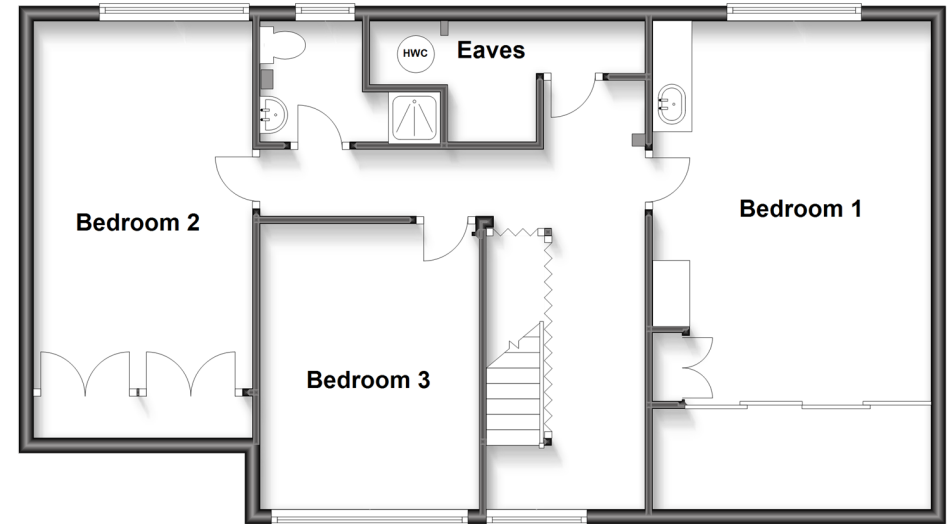
Ground Floor

Approx. 113.6 sq. metres (1222.7 sq. feet)



First Floor

Approx. 72.7 sq. metres (782.0 sq. feet)



Accommodation

GROUND FLOOR

Porch
 Entrance Hall
 Bathroom: 8'8 x 6'0 (2.64m x 1.83m)
 Sitting/Play Room: 11'9 x 9'5 (3.58m x 2.87m)
 Lounge: 20'5 x 12'4 (6.23m x 3.76m)
 Dining Room: 10'3 x 10'1 (3.13m x 3.08m)
 Kitchen: 12'6 x 9'9 (3.81m x 2.97m)
 Garden Room : 16'4 x 11'8 (4.98m x 3.56m)

FIRST FLOOR

Bedroom 1 : 16'9 x 12'4 (5.11m x 3.76m)
 Bedroom 2 : 16'4 x 9'9 (4.98m x 2.97m)
 Bedroom 3 : 12'0 x 9'4 (3.66m x 2.85m)
 Shower Room

OUTSIDE

Front Garden
 Rear Garden
 Integral Garage: 21'3 x 9'9 (6.48m x 2.97m)
 Driveway



Main features

- A deceptively spacious property that would make a great long term home
- Impressive 20ft lounge and additional sitting/play room
- Useful downstairs bathroom
- Established private rear garden
- Sought after Hartlip location
- No forward chain



Nearest Schools

Primary Schools: Hartlip Endowed C of E Primary, Miers Court Primary, Riverside Primary
Secondary Schools: Leigh Academy Rainham, Rainham School for Girls, The Howard School, Rainham Mark Grammar School



Transport Information

Train Stations: Newington 1.4 miles, Rainham 1.8 miles, Sittingbourne 4.2 miles



Address

The Street, Hartlip, Sittingbourne, Kent, ME9



Directions

For directions to this property please contact us.



Wards
Helping you move forwards

Call Rainham Branch 01634 373531 ■ wardsofkent.co.uk



■ Legal advice should be taken to verify fixtures/fittings, planning, alterations and/or lease details ■ Appliances & services are untested, dimensions are approximate and floor plans are not to scale



11337884/20230502/AJ/DW