



Price
£285,000

Freehold

3x  1x  1x 

**The Willows,
Newington,
Sittingbourne, Kent,
ME9**

OVER 60?

Secure this property
for up to **59% less!**

Wards
Helping you move forwards



Main features

- A spacious property that offers excellent value for money
- Generous lounge and open plan kitchen/diner
- Low maintenance rear garden
- Useful garage to rear
- Popular village location

Accommodation

GROUND FLOOR

Porch

Lounge : 14'7 x 14'4 (4.45m x 4.37m)

Kitchen/Diner: 14'6 x 9'9 (4.42m x 2.97m)

FIRST FLOOR

Landing

Bedroom 1 : 13'5 x 8'4 (4.09m x 2.54m)

Bedroom 2 : 9'2 x 8'3 (2.80m x 2.52m)

Bedroom 3 : 10'7 x 6'0 (3.23m x 1.83m)

Shower Room

Loft Room : 14'7 x 11'5 (4.45m x 3.48m)

OUTSIDE

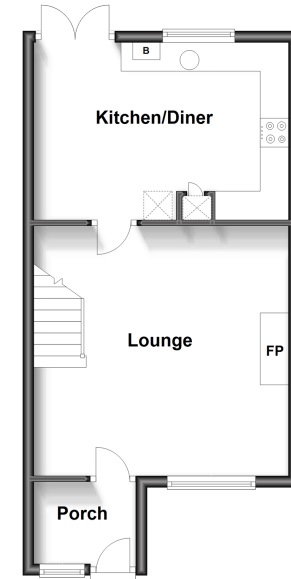
Front Garden

Rear Garden

Garage to Rear : 16'1 x 8'0 (4.91m x 2.44m)

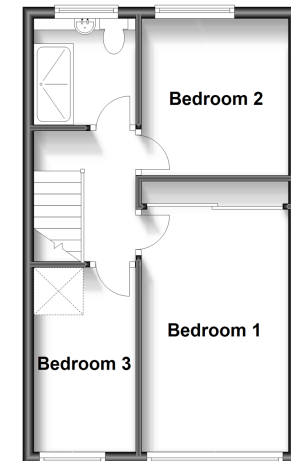
Ground Floor

Approx. 36.7 sq. metres (395.1 sq. feet)



First Floor

Approx. 34.1 sq. metres (366.5 sq. feet)



Call Rainham - 01634 373531 ■ wardsofkent.co.uk

- Legal advice should be taken to verify fixtures/fittings, planning, alterations and/or lease details
- Appliances & services are untested, dimensions are approximate and floor plans are not to scale
- Through a Homewise Home For Life Plan people aged 60+ can secure this property for up to 59% less, by purchasing a Lifetime Lease.



11337983/20230516/DW/DW