

**OVER 60?**

Secure this property  
for up to **59% less!**



**Price**  
**£500,000**  
**Freehold**

4x  3x  3x 

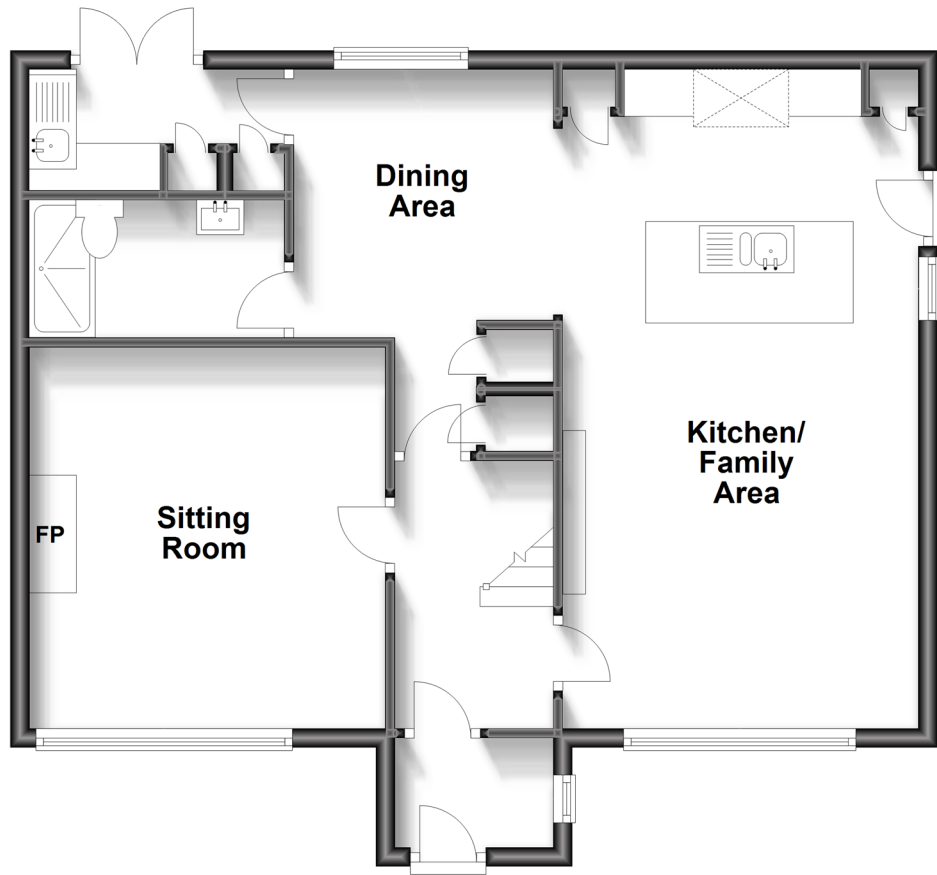
London Road, Newington, Sittingbourne,  
Kent, ME9

*Wards*  
Helping you move forwards



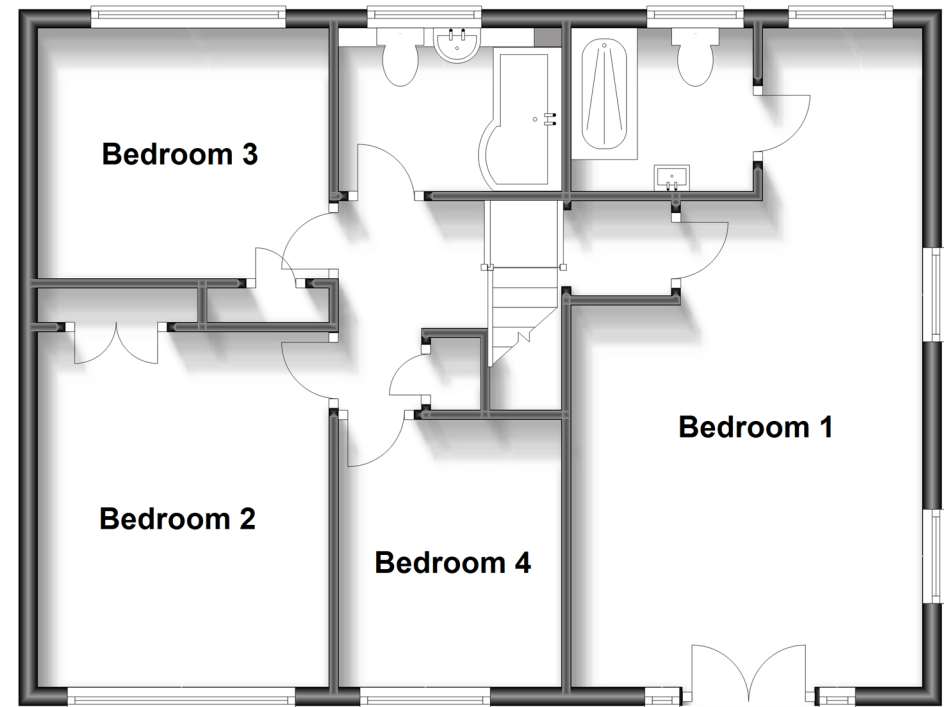
## Ground Floor

Approx. 68.0 sq. metres (732.3 sq. feet)



## First Floor

Approx. 65.6 sq. metres (706.0 sq. feet)



## Accommodation

### GROUND FLOOR

Rear Porch  
Entrance Hall  
Sitting Room: 13'3 x 12'3 (4.04m x 3.74m)  
Kitchen/Family Area: 22'3 x 12'7 (6.79m x 3.84m)  
Dining Area : 11'6 x 8'0 (3.51m x 2.44m)  
Shower Room  
Utility Area: 9'3 x 5'3 (2.82m x 1.60m)

### FIRST FLOOR

Landing  
Bedroom 1 : 22'3 x 12'5 (6.79m x 3.79m)  
En-Suite Shower Room  
Bedroom 2 : 11'9 x 10'5 (3.58m x 3.18m)  
Bedroom 3 : 10'6 x 10'4 (3.20m x 3.15m)  
Bedroom 4 : 9'3 x 7'7 (2.82m x 2.31m)  
Bathroom

### OUTSIDE

Front Garden  
Rear Garden  
Driveway



## Main features

- A spacious and extended property that would be a perfect family home
- Impressive 22ft open plan kitchen/family area
- Separate sitting room and downstairs shower room
- 22ft bedroom 1 with juliette balcony and rural views
- Popular village location



### Nearest Schools

Primary Schools: Newington C of E Primary, Hartlip Endowed C of E Primary, Lower Halstow Primary  
Secondary Schools: The Westlands School, Leigh Academy Rainham, Rainham School for Girls, The Howard School



### Transport Information

Train Stations: Newington 0.2 miles, Rainham 2.3 miles, Kemsley 3.1 miles



### Address

London Road, Newington, Sittingbourne, Kent, ME9



### Directions

For directions to this property please contact us.





Call Rainham Branch 01634 373531 ■ [wardsofkent.co.uk](http://wardsofkent.co.uk)



- Legal advice should be taken to verify fixtures/fittings, planning, alterations and/or lease details
- Appliances & services are untested, dimensions are approximate and floor plans are not to scale
- Through a Homewise Home For Life Plan people aged 60+ can secure this property for up to 59% less, by purchasing a Lifetime Lease.



11338068/20230626/CW/DW