

**OVER 60?**

Secure this property  
for up to **59% less!**



**Price**  
**£300,000**  
**Freehold**

2x  1x  1x 

Lonsdale Drive, Rainham, Gillingham, Kent,  
ME8

*Wards*  
Helping you move forwards





## Main features

- A deceptively spacious property that would be perfect for downsizing
- Generous open plan lounge/diner and shower room
- Low maintenance rear garden
- Popular central location
- No forward chain

## Accommodation

### GROUND FLOOR

Porch  
 Entrance Hall  
 Bedroom 1 : 11'9 x 10'0 (3.58m x 3.05m)  
 Bedroom 2 : 9'9 x 7'6 (2.97m x 2.29m)  
 Shower Room  
 Kitchen/Breakfast Room: 10'0 x 9'9 (3.05m x 2.97m)  
 Lounge/Diner : 16'4 at widest point x 16'1 (4.98m x 4.91m)

### LOWER GROUND FLOOR

Garage

### OUTSIDE

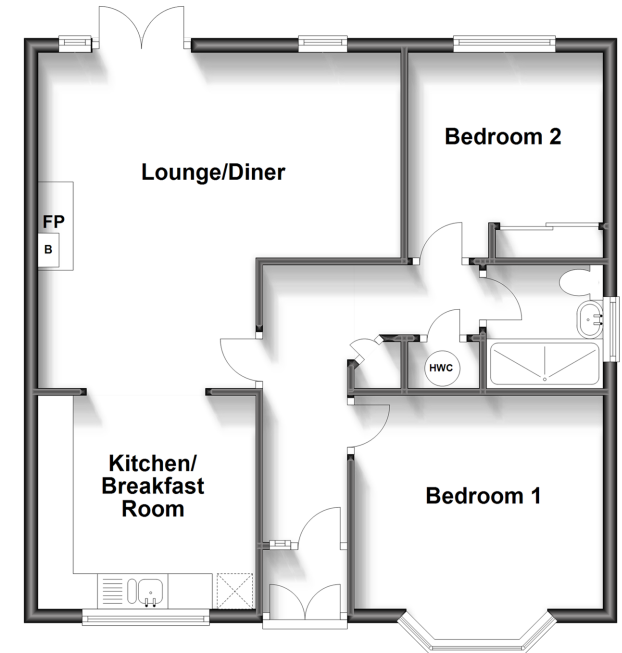
Front Garden  
 Rear Garden  
 Driveway

**Call Rainham - 01634 373531 ■ [wardsofkent.co.uk](http://wardsofkent.co.uk)**

- Legal advice should be taken to verify fixtures/fittings, planning, alterations and/or lease details
- Appliances & services are untested, dimensions are approximate and floor plans are not to scale
- Through a Homewise Home For Life Plan people aged 60+ can secure this property for up to 59% less, by purchasing a Lifetime Lease.

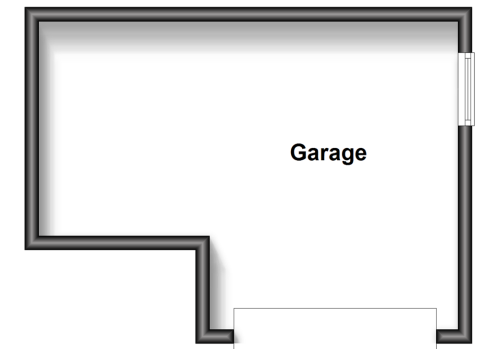
### Ground Floor

Approx. 63.4 sq. metres (682.1 sq. feet)



### Lower Ground Floor

Approx. 22.7 sq. metres (244.9 sq. feet)



11338073 / 20240305 / AJ/DW